



Patapsco Regional Greenway: Stoney Run Trail

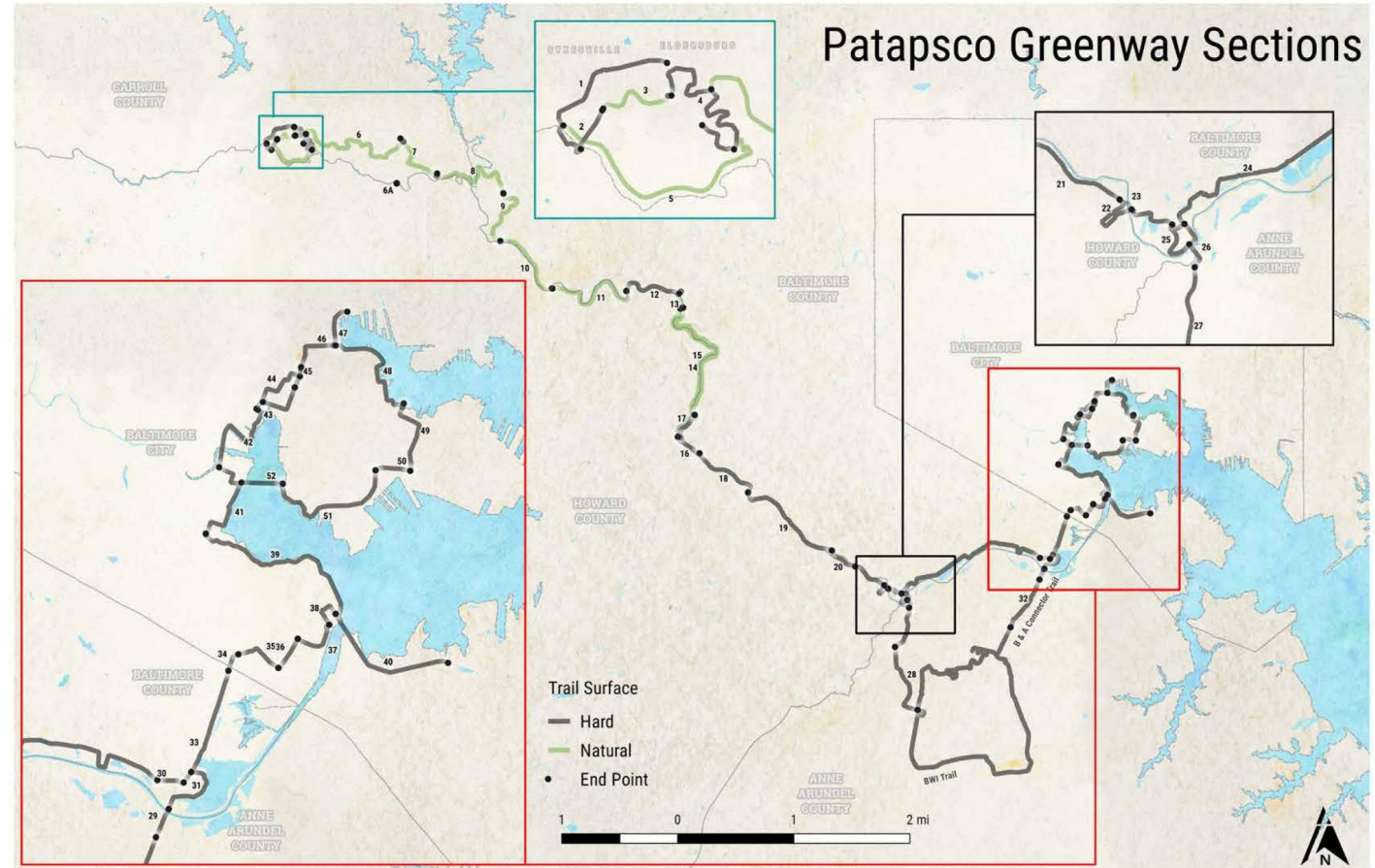
30% Design Preferred Alignment

March 19, 2025



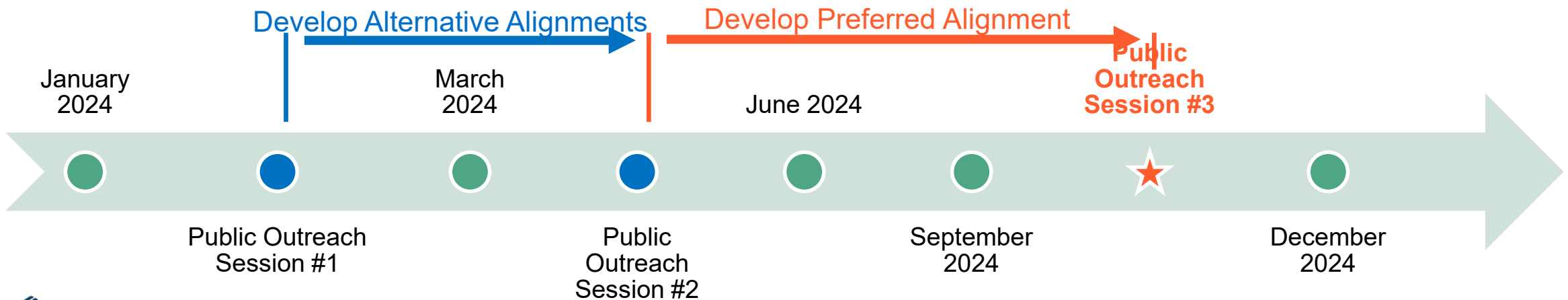
Patapsco Regional Greenway Trail

- The Patapsco Regional Greenway is a planned 40-mile greenway connecting Sykesville in Carroll County to the Baltimore Inner Harbor, traversing the Patapsco Valley in Anne Arundel, Baltimore, and Howard Counties.
 - Parts of the 10-12 foot wide shared-use trail are already constructed and open for use.



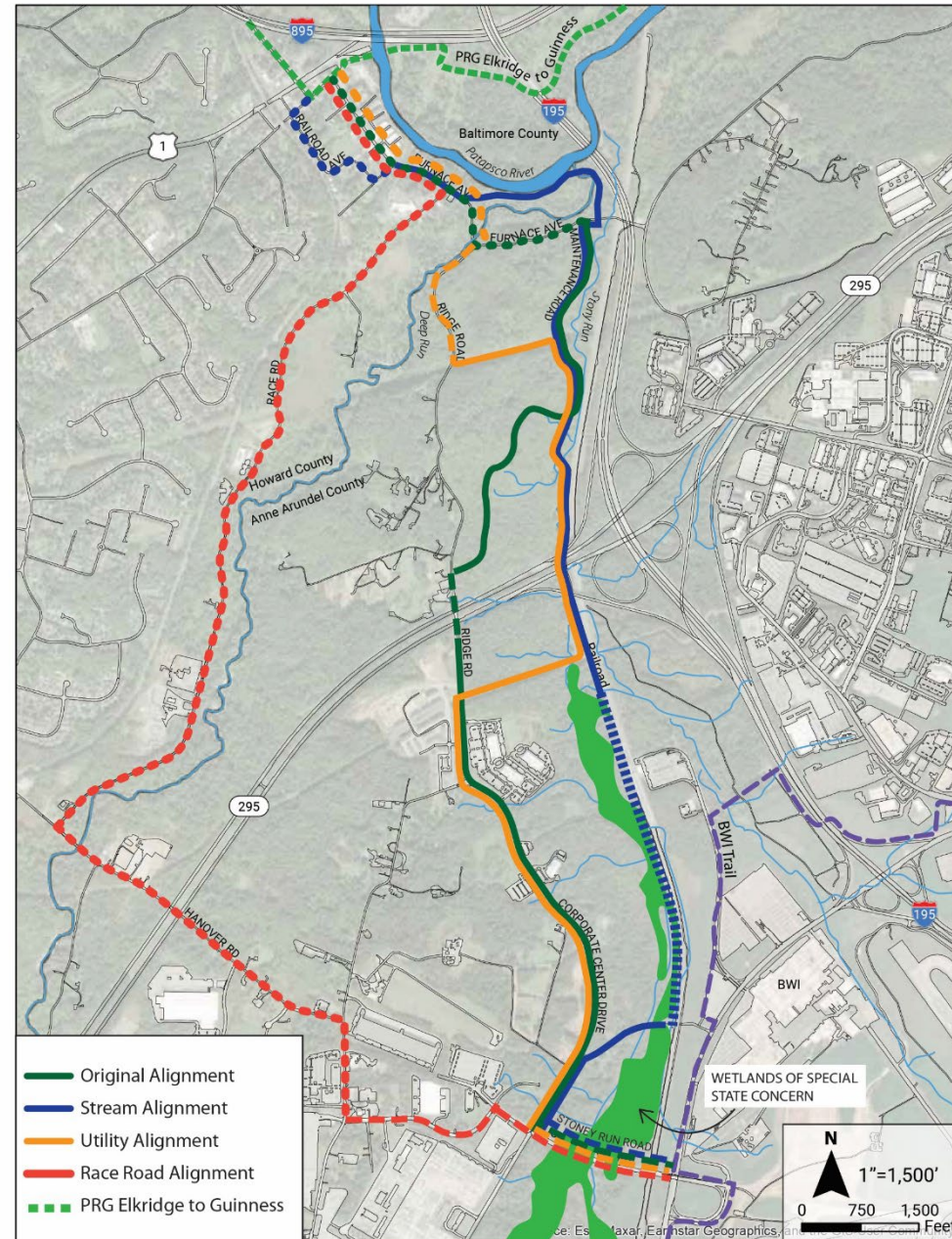
Project Timeline

- **There were 3 Public Comment periods and meetings**
 - February 2024: Project Introduction Open House
 - May 2024: Present 4 alternative alignments and gather public feedback
 - December 2024: Present preferred alternative and wrap up 30% design
- **Public feedback received and incorporated into decision-making:**
 - Important to connect to existing trails, be inclusive for people of all ages and abilities, limit on-road trail segments and provide barriers to separate the shared-use path



4 Alignment Options

- Original Alignment
- Stream Alignment
- Utility Alignment
- Race Road Alignment

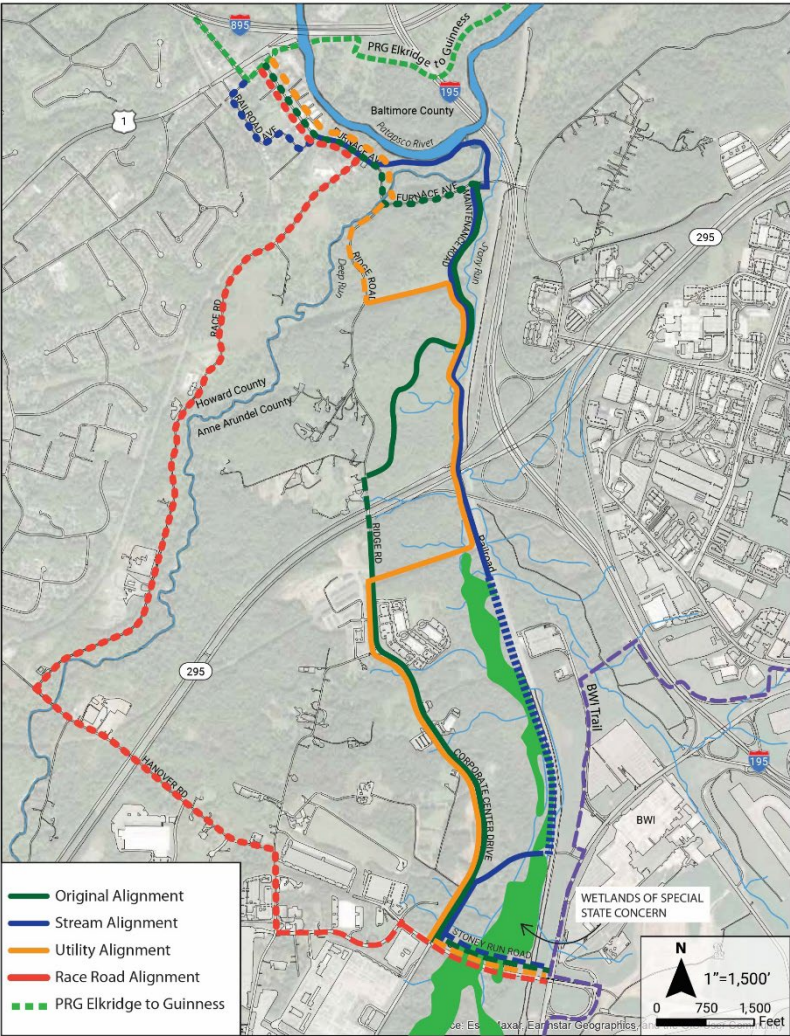


Alignment Options

We are considering four potential locations for this new trail in our community. Please rate your preference for each location based on safety, accessibility and convenience:

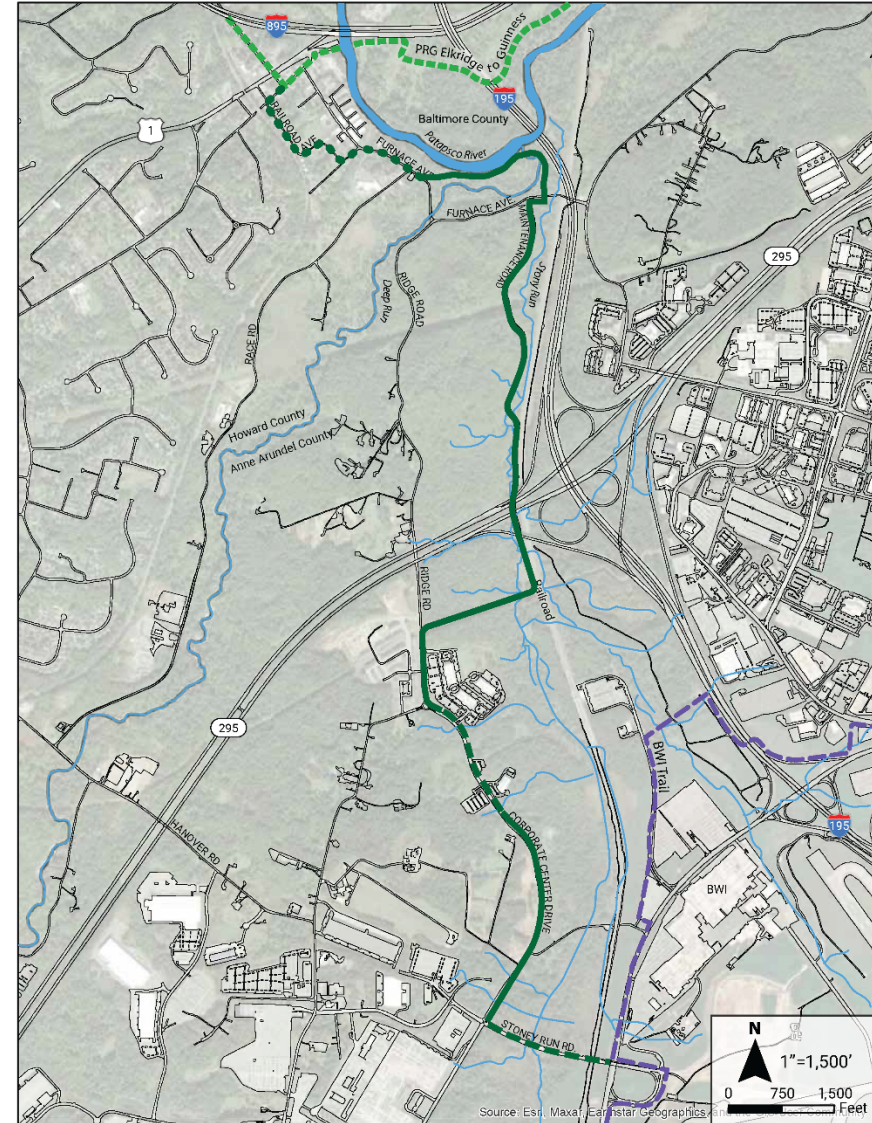
1. Original route	26% I do not like this option at all	16% I slightly dislike this option	31% It's OK	16% I somewhat like this option	11% I really like this option	- I don't know
2. Stream alignment	4% I do not like this option at all	3% I slightly dislike this option	4% It's OK	21% I somewhat like this option	68% I really like this option	- I don't know
3. Utility option	27% I do not like this option at all	11% I slightly dislike this option	14% It's OK	31% I somewhat like this option	17% I really like this option	- I don't know
4. Race Road route	60% I do not like this option at all	18% I slightly dislike this option	15% It's OK	3% I somewhat like this option	4% I really like this option	- I don't know

72 respondents

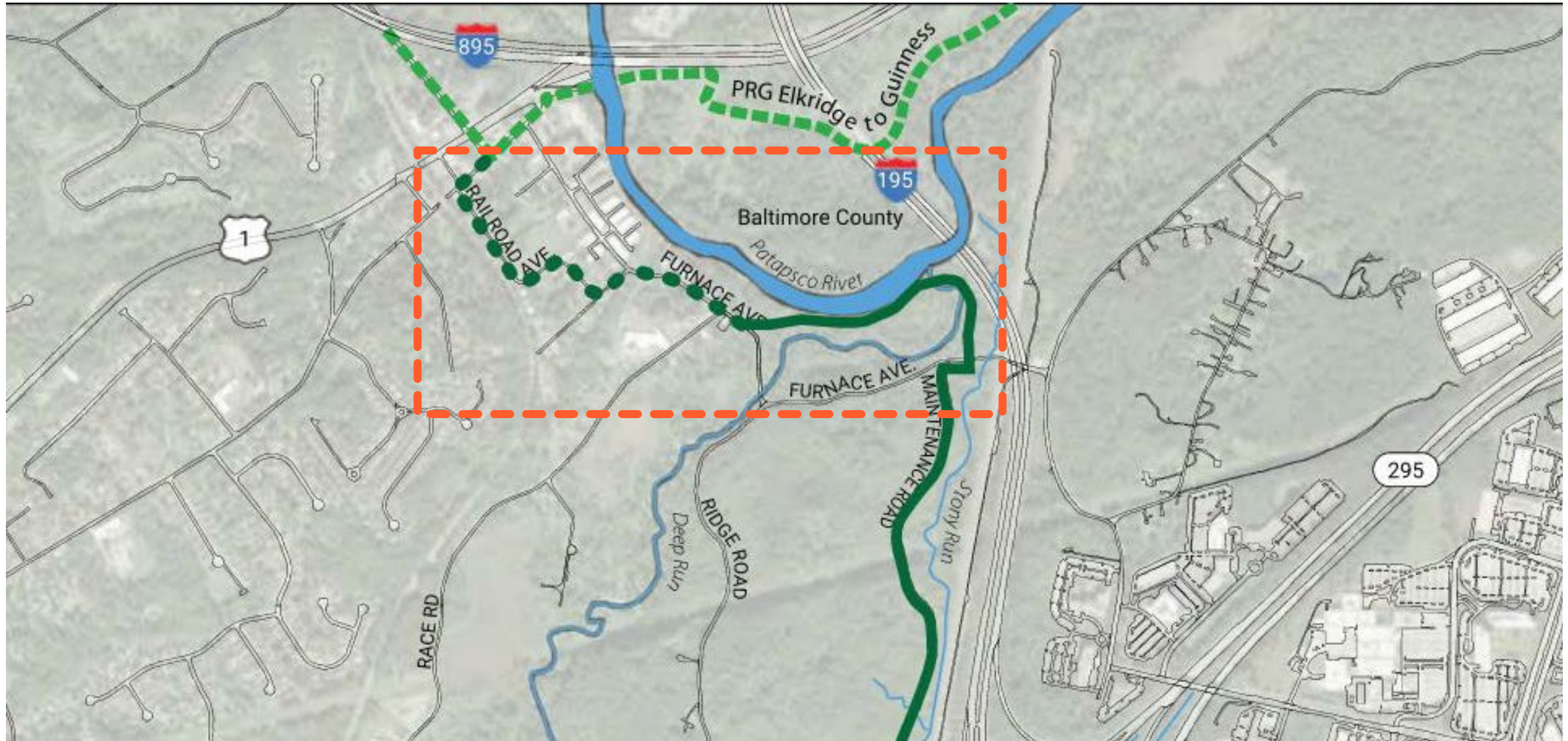


Preferred Alignment

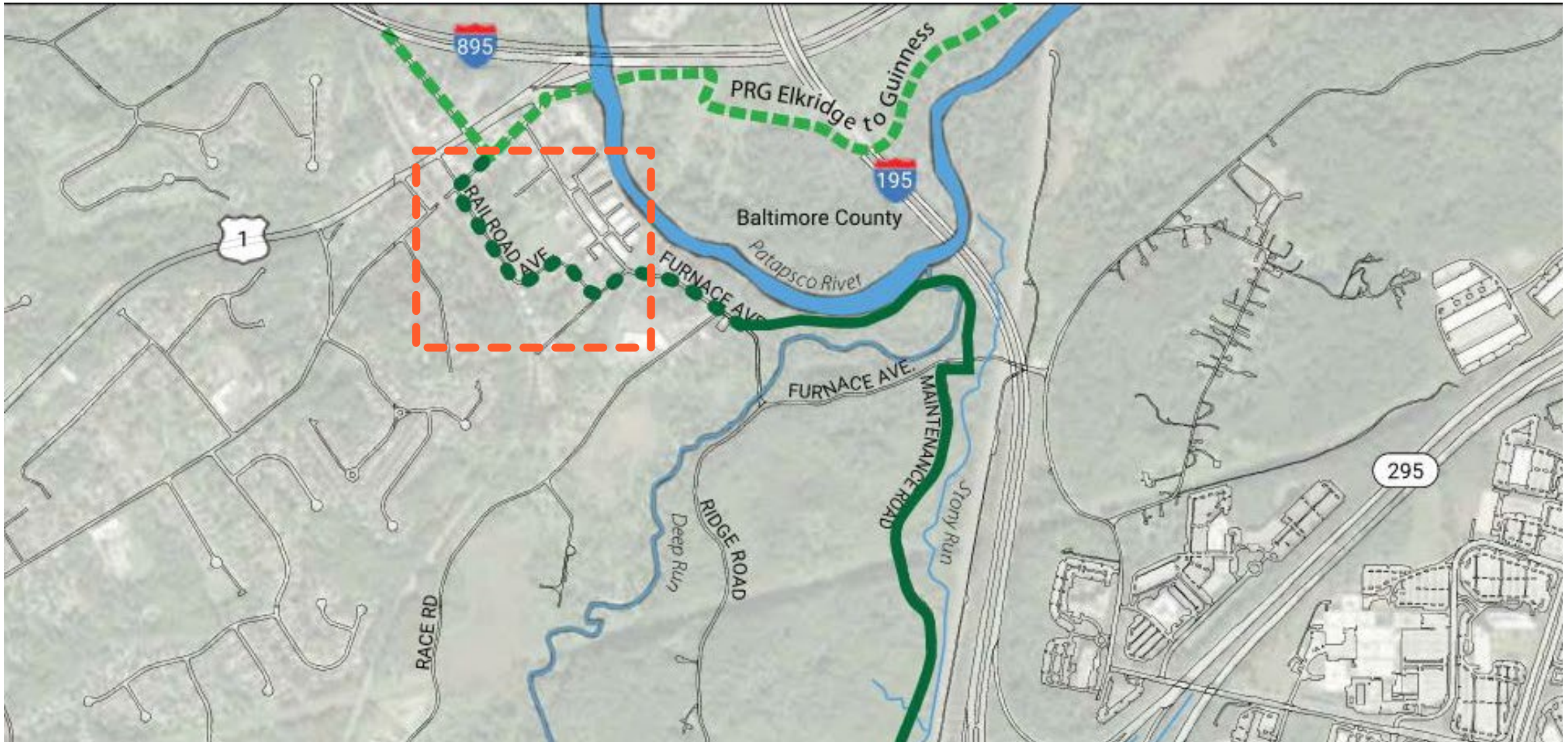
- Combination of the Stream Option and Utility Option
- Elimination of dangerous section of Furnace Avenue on-road section
- Extensive trail length in natural setting
- Minimizes environmental impacts
- Connects to residential and commercial properties
- Use of existing easements
- Limited safety concerns



PREFERRED ALIGNMENT – FURNACE AVENUE SECTION



PREFERRED ALIGNMENT – RAILROAD AVENUE



PREFERRED ALIGNMENT – RAILROAD AVENUE



EXISTING RAILROAD AVE. – LOOKING NORTHEAST



PRECEDENT IMAGE - SHARROW

PREFERRED ALIGNMENT – FURNACE AVENUE



PREFERRED ALIGNMENT – FURNACE AVENUE



EXISTING FURNACE AVENUE – LOOKING EAST



PRECEDENT IMAGE – SEPARATED SHOULDER TRAIL

PREFERRED ALIGNMENT – FURNACE AVENUE



FURNACE AVENUE AT THE ELKRIDGE FURNACE INN

PREFERRED ALIGNMENT – PATAPSCO RIVER



PREFERRED ALIGNMENT – PATAPSCO RIVER



EXISTING PATAPSCO RIVER FLOOD PLAIN NORTH OF
FURNACE AVENUE– LOOKING EAST

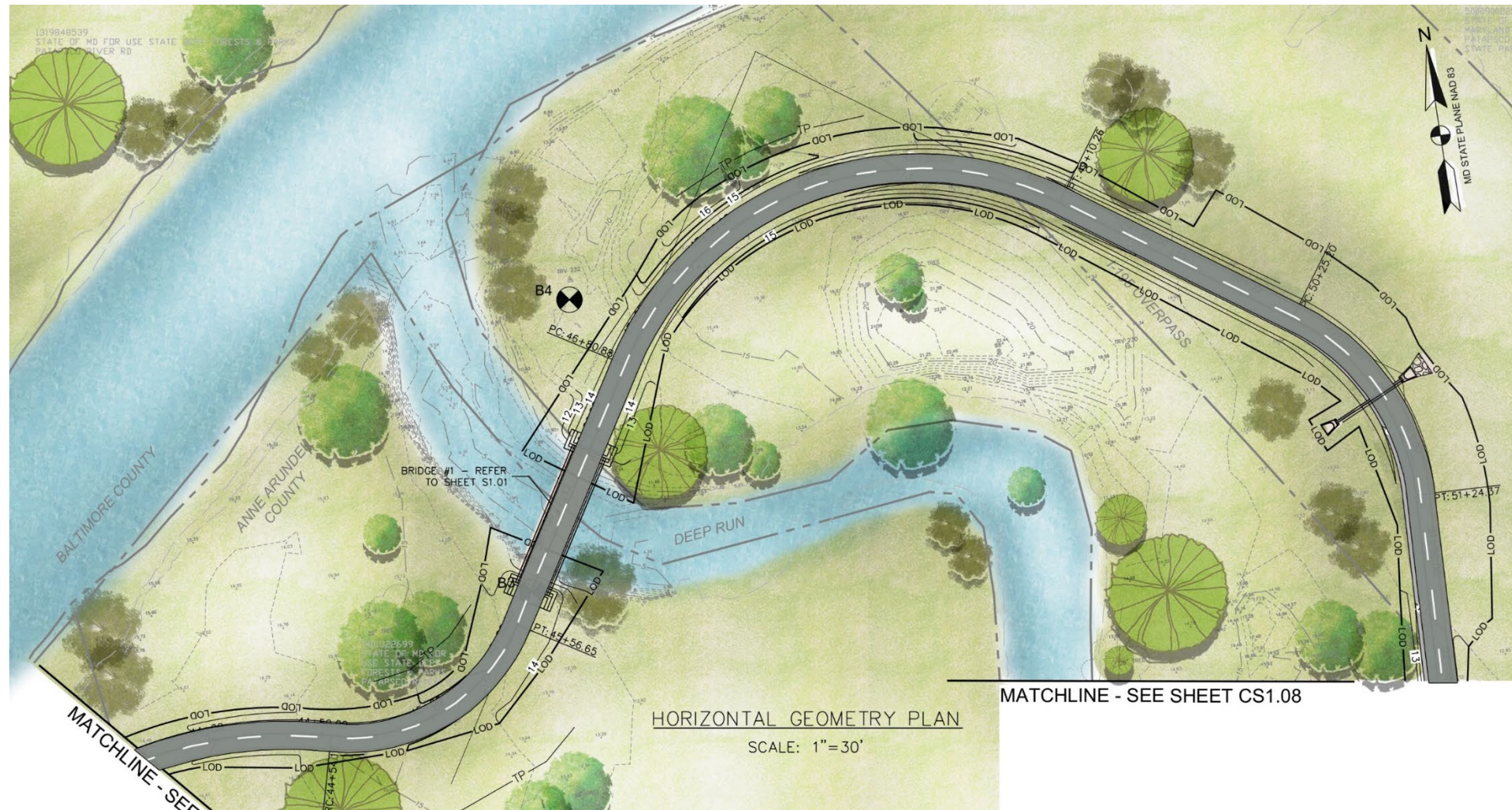


PRECEDENT IMAGE – STREAM CROSSING

PREFERRED ALIGNMENT – PATAPSCO RIVER



A. MORTON THOMAS AND ASSOCIATES, INC.



BRIDGE CROSSING AT DEEP RUN

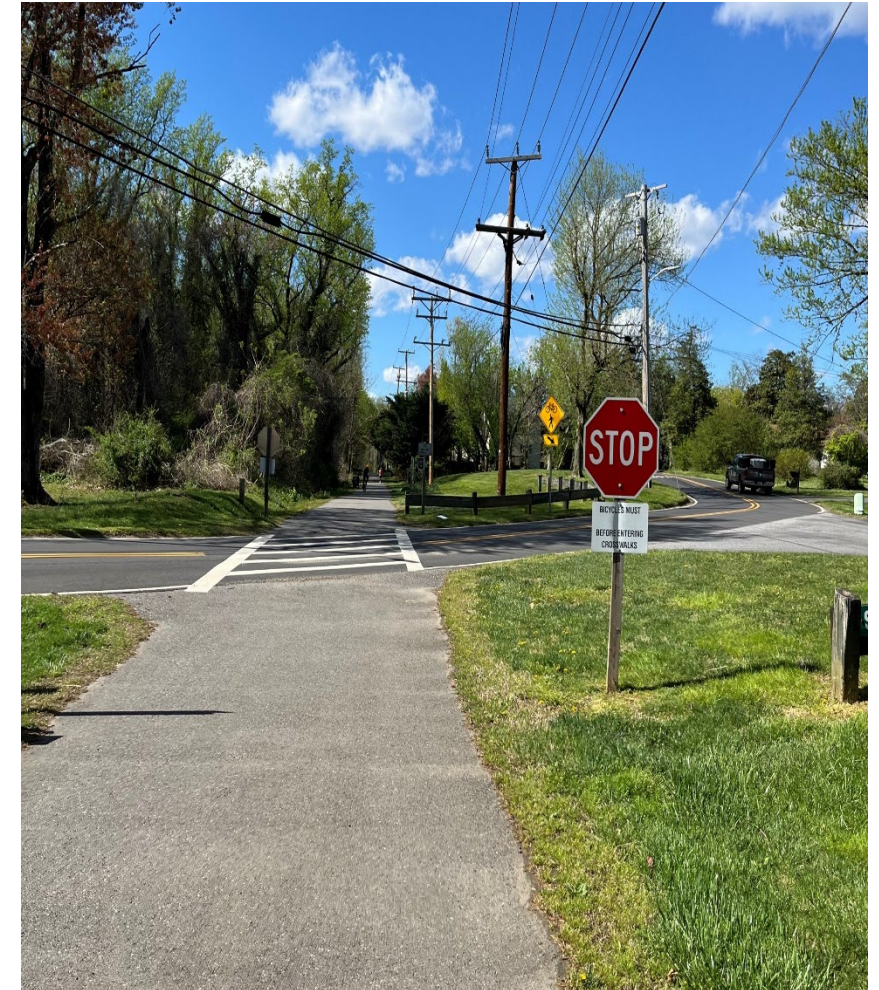
PREFERRED ALIGNMENT – FURNACE AVENUE CROSSING



PREFERRED ALIGNMENT – FURNACE AVENUE CROSSING



EXISTING FURNACE AVE. – LOOKING WEST



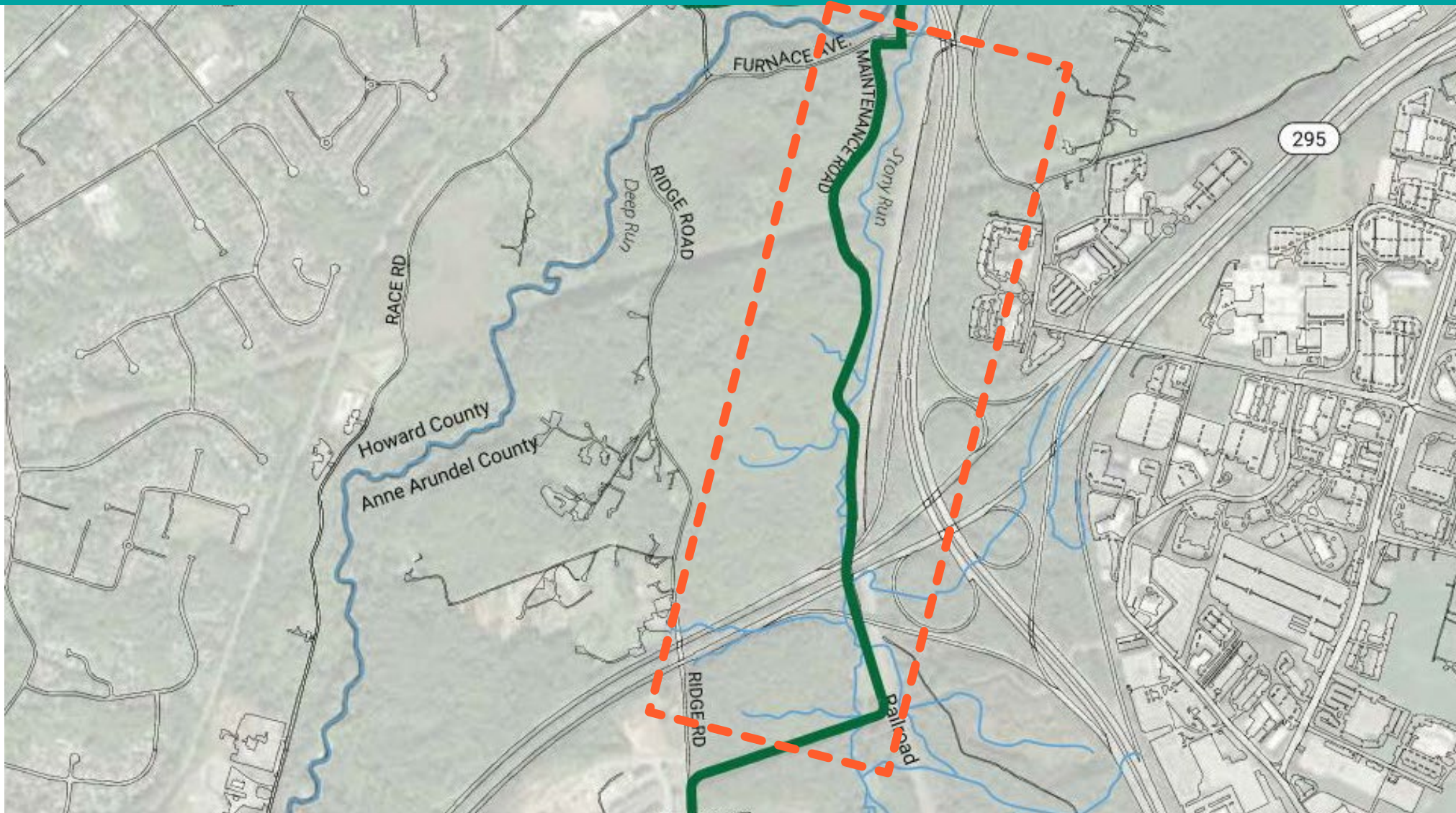
PRECEDENT IMAGE – TRAIL CROSSING

PREFERRED ALIGNMENT – FURNACE AVENUE CROSSING



FURNACE AVENUE CROSSING

PREFERRED ALIGNMENT – MAINTENANCE ROAD



PREFERRED ALIGNMENT – MAINTENANCE ROAD



EXISTING MAINTENANCE ROAD –
LOOKING SOUTH



PRECEDENT IMAGE – OFF-ROAD MULTI-USE TRAIL
IN NATURAL SETTING

PREFERRED ALIGNMENT – MAINTENANCE ROAD



EXISTING MAINTENANCE RD – LOOKING NORTHEAST

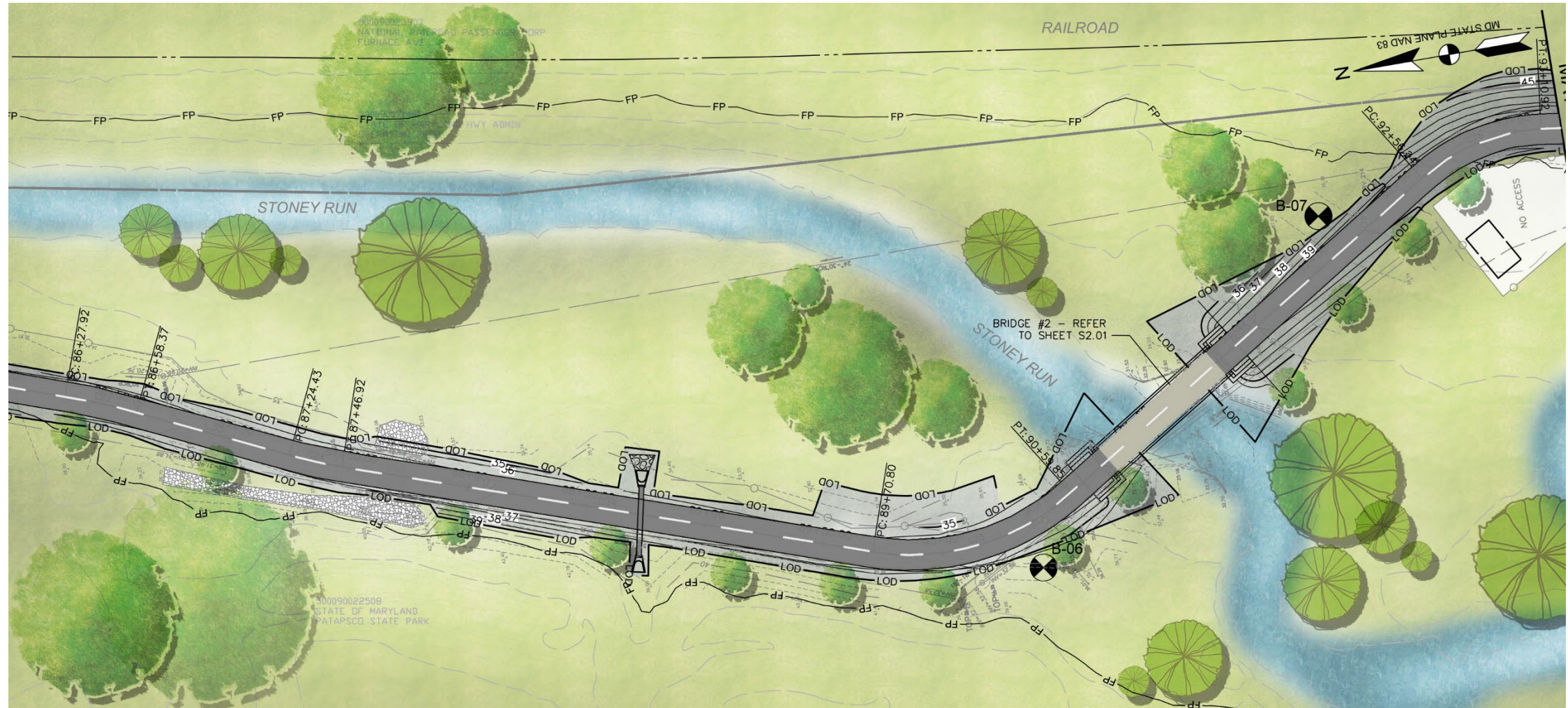


PRECEDENT IMAGE – OFF-ROAD
MULTI-USE TRAIL

PREFERRED ALIGNMENT – MAINTENANCE ROAD

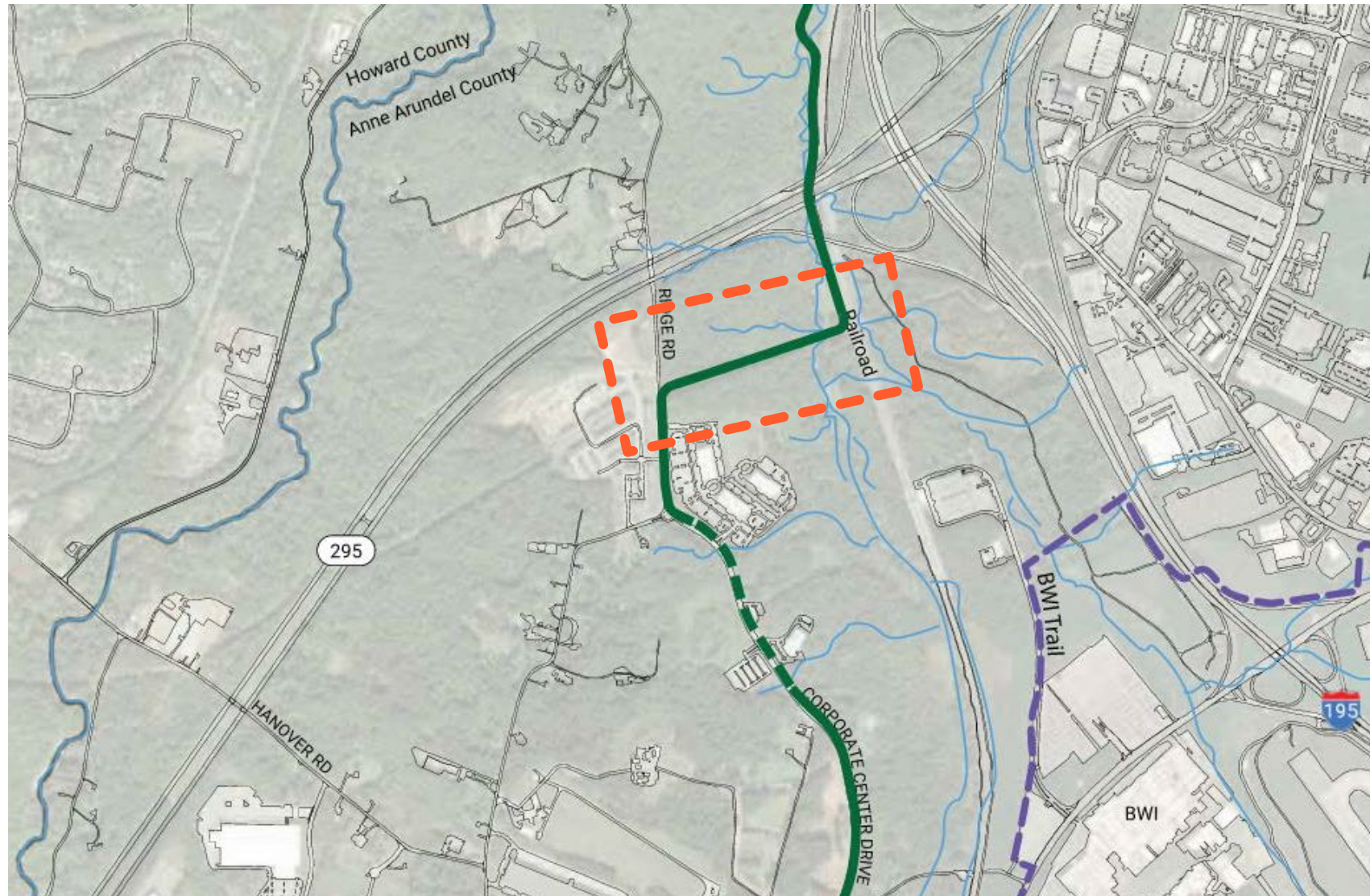


A. MORTON THOMAS AND ASSOCIATES, INC.



MAINTENANCE ROAD CROSSING OF STONEY RUN

PREFERRED ALIGNMENT – COLONIAL PIPELINE ROW



PREFERRED ALIGNMENT – COLONIAL PIPELINE ROW

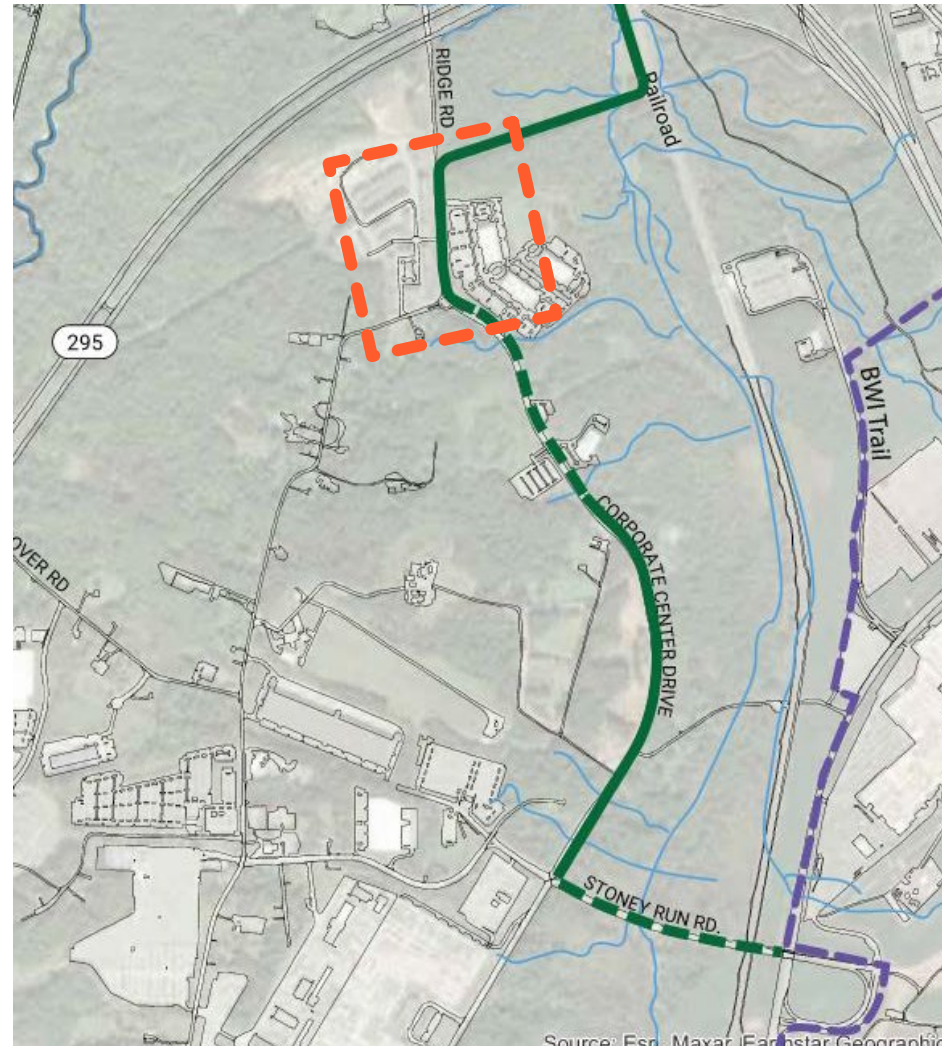


EXISTING COLONIAL PIPELINE ROW – LOOKING EAST



PRECEDENT IMAGE – MULTI-USE TRAIL

PREFERRED ALIGNMENT – RIDGE ROAD



PREFERRED ALIGNMENT – RIDGE ROAD



EXISTING RIDGE ROAD— LOOKING SOUTH



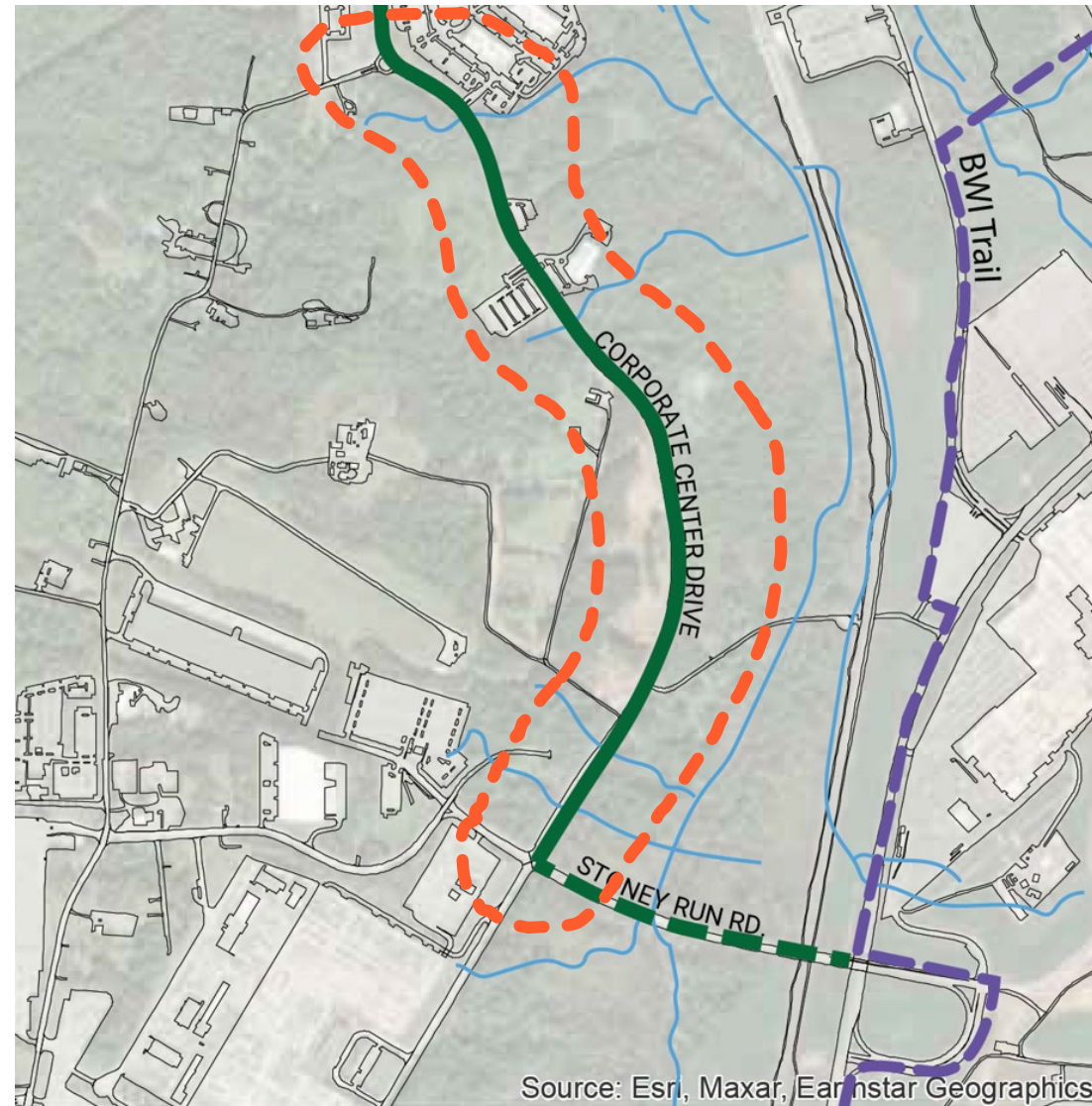
PRECEDENT IMAGE – OFF ROAD TRAIL

PREFERRED ALIGNMENT – RIDGE ROAD



RIDGE ROAD SOUTH OF I-295 CROSSING

PREFERRED ALIGNMENT – CORPORATE CENTER DRIVE



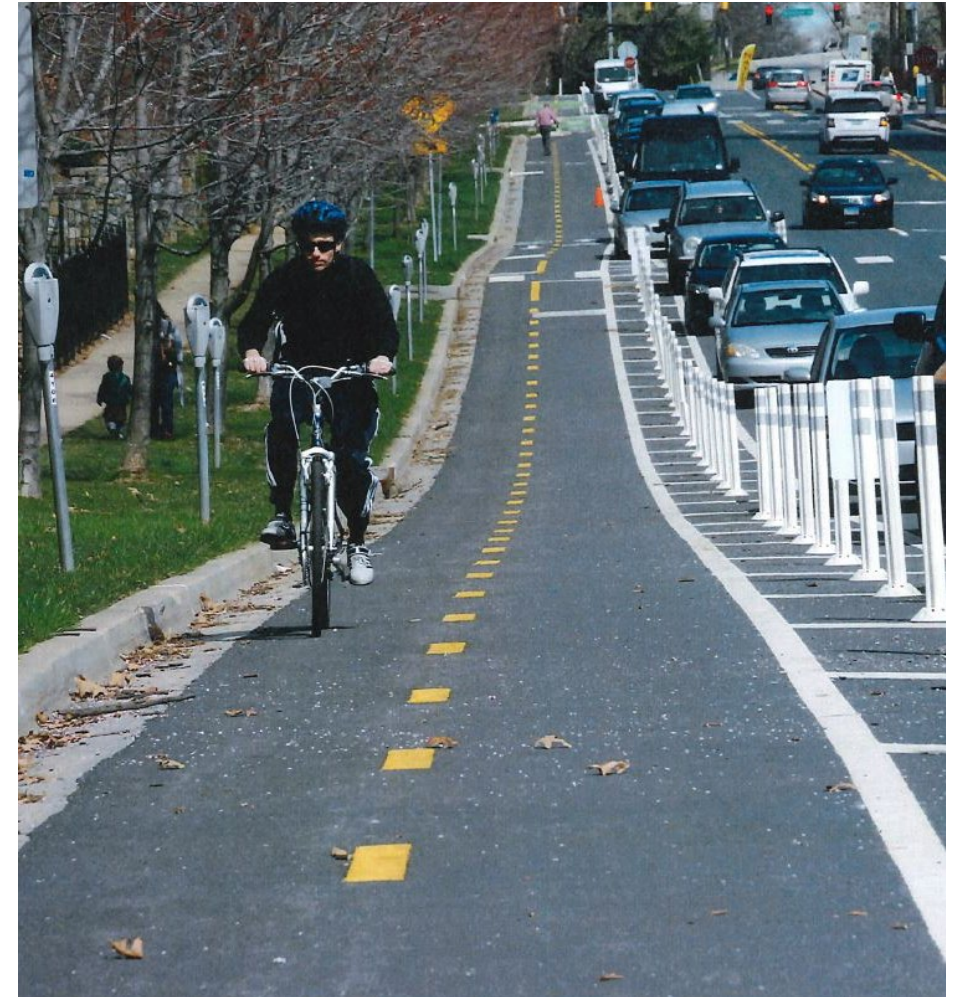
PREFERRED ALIGNMENT – CORPORATE CENTER DRIVE



A. MORTON THOMAS AND ASSOCIATES, INC.



EXISTING CORPORATE CENTER DR. – LOOKING NORTH



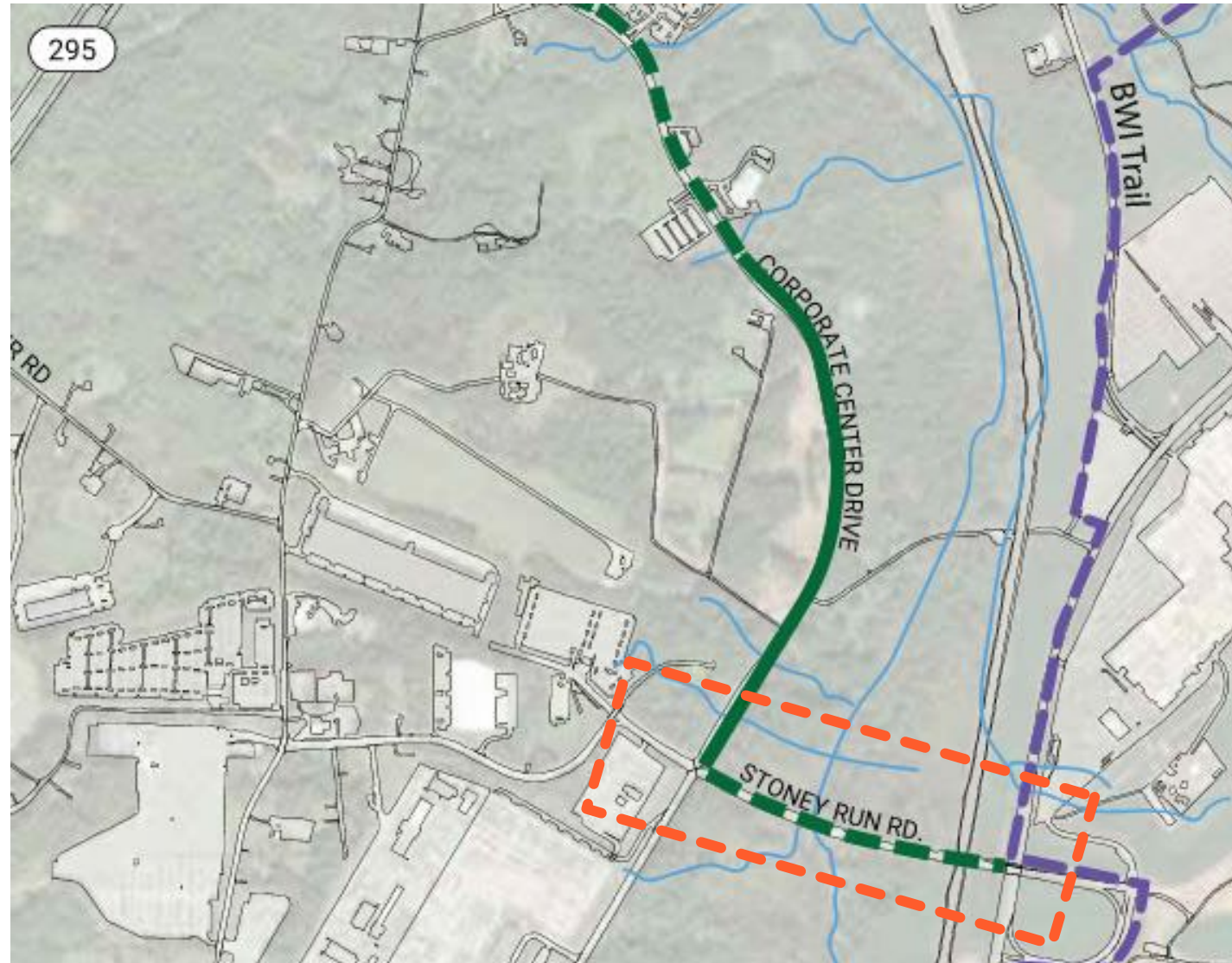
PRECEDENT IMAGE – SEPARATED SHOULDER

PREFERRED ALIGNMENT – CORPORATE CENTER DRIVE



CORPORATE CENTER DRIVE SOUTH OF MDOT HEADQUARTERS

PREFERRED ALIGNMENT – STONEY RUN ROAD



UTILITY ALIGNMENT #3 – STONEY RUN ROAD



EXISTING STONEY RUN ROAD– LOOKING EAST



PRECEDENT IMAGE – SEPARATED SHOULDER TRAIL

Page 10 of 10

410-732-0500 x1050 | amarshall@baltometro.org | www.baltometro.org

