

Port of Baltimore Rail Capacity Modernization Project

Baltimore Regional Transportation Board Meeting

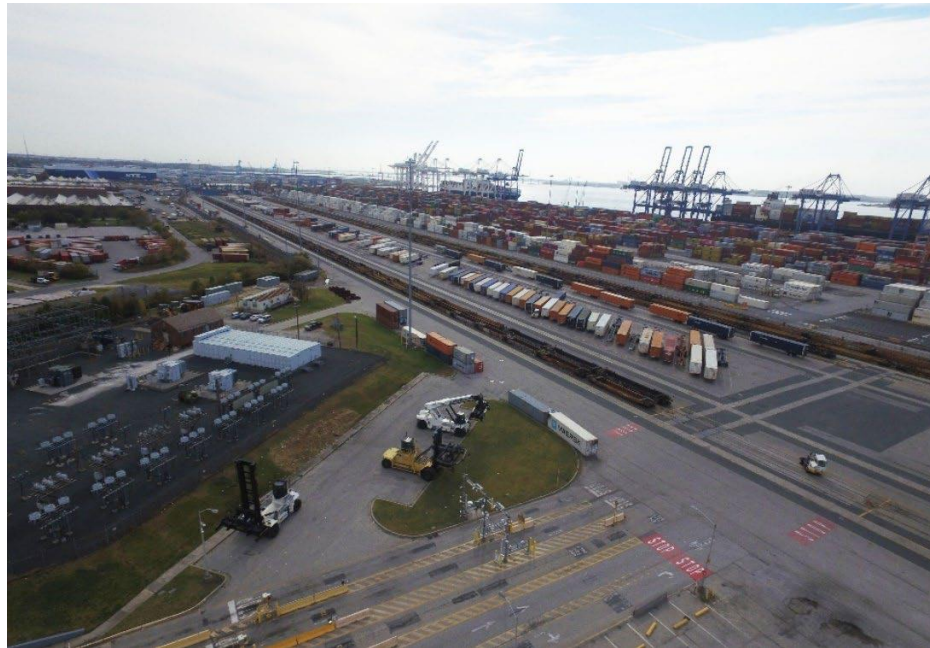
6.28.2022



Port of Baltimore Rail Capacity Modernization Project

Ports America Chesapeake (PAC) operates the Intermodal Container Transfer Facility (ICTF) at **Seagirt Marine Terminal**, under a public-private partnership with **MDOT MPA**.

The **ICTF** is a dual-access facility between Norfolk Southern and CSX that is currently serviced by **CSX**.

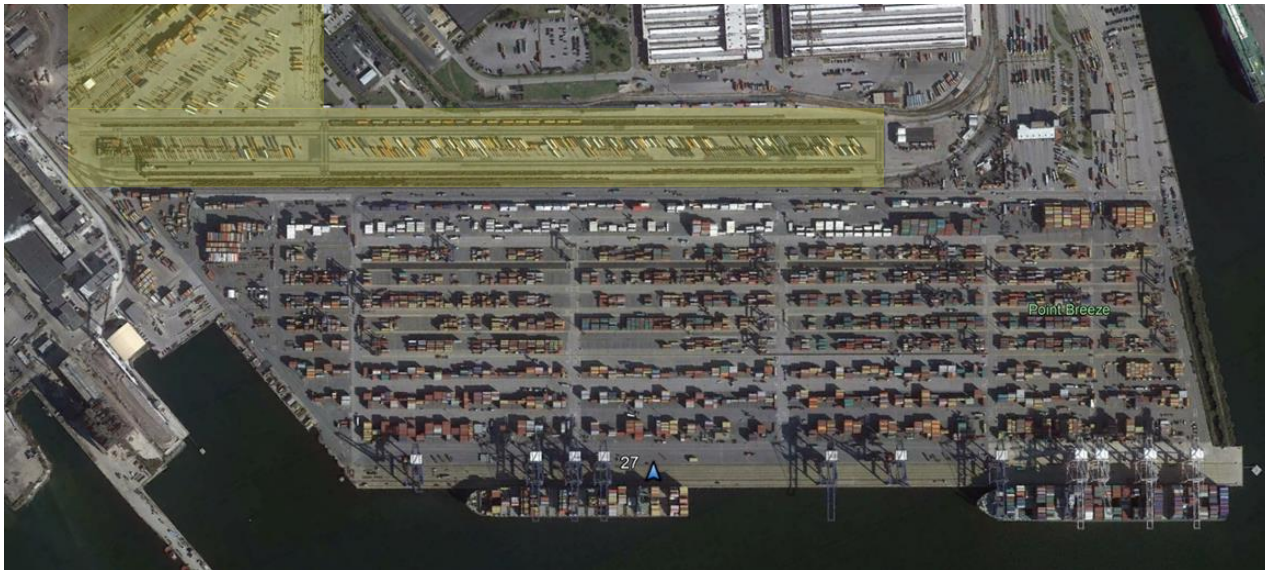


Port of Baltimore Rail Capacity Modernization Project

The existing facility at the ICTF was constructed 33 years ago.

PAC/MDOT MPA were recently awarded a grant through the Federal Railroad Administration's (FRA) **Consolidated Rail Infrastructure and Safety Improvements (CRISI)** Program in order to begin work on modernizing the terminal.

Project Location:



Port of Baltimore Rail Capacity Modernization Project

Project Objectives:

- **Safety:** Upgrades infrastructure to achieve a higher level of safety.
- **Equitable economic strength, improving core assets:** Invests in vital infrastructure assets, addresses capital needs to connect farms, factories, and shippers to the rail network.
- **Resilience, addressing climate change:** Reduces emissions, promotes energy efficiency, redevelops existing infrastructure.
- **Racial equity, economic inclusion:** Reduces the safety risks and detrimental quality of life effects that freight movements can have on communities.
- **Transformation of our nation's transportation infrastructure:** Adds capacity to congested corridors by aligning with the completion of the expansion of the Howard Street Tunnel Project and the ability to double stack containers by rail.

Port of Baltimore Rail Capacity Modernization Project

Project Award:

- \$15.68M in federal funding
- \$6.72M in private funding
- Total project cost - \$22.4M

Project Scope:

- Construct four new working tracks totaling 17,670 feet
- Demolish two previously existing tracks
- Construct two crane rail beams totaling 7,160 linear feet.



Port of Baltimore Rail Capacity Modernization Project

Project Benefits:

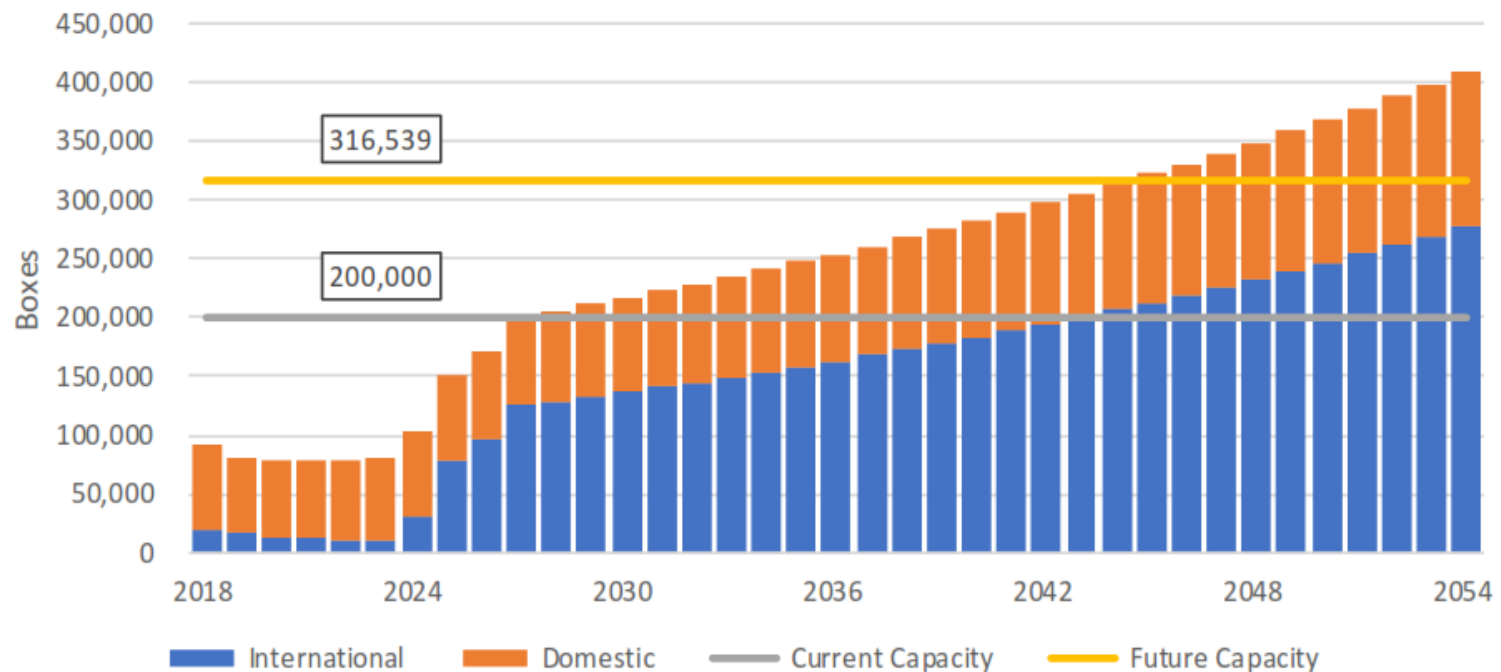
- Increased capacity and efficiency for containerized cargo to be shipped by rail, bypassing critical, congested roadways of the northeast U.S.
- Improved road safety
- Reduced Emissions from Over the road truck (OTR) and Container Handling Equipment (CHE) in the port.
- By allowing double-stack trains to access the Port, the Howard Street Tunnel Project will increase efficiencies and capacity for commercial train traffic and facilitate business growth



Port of Baltimore Rail Capacity Modernization Project

Projected Volume Increase:

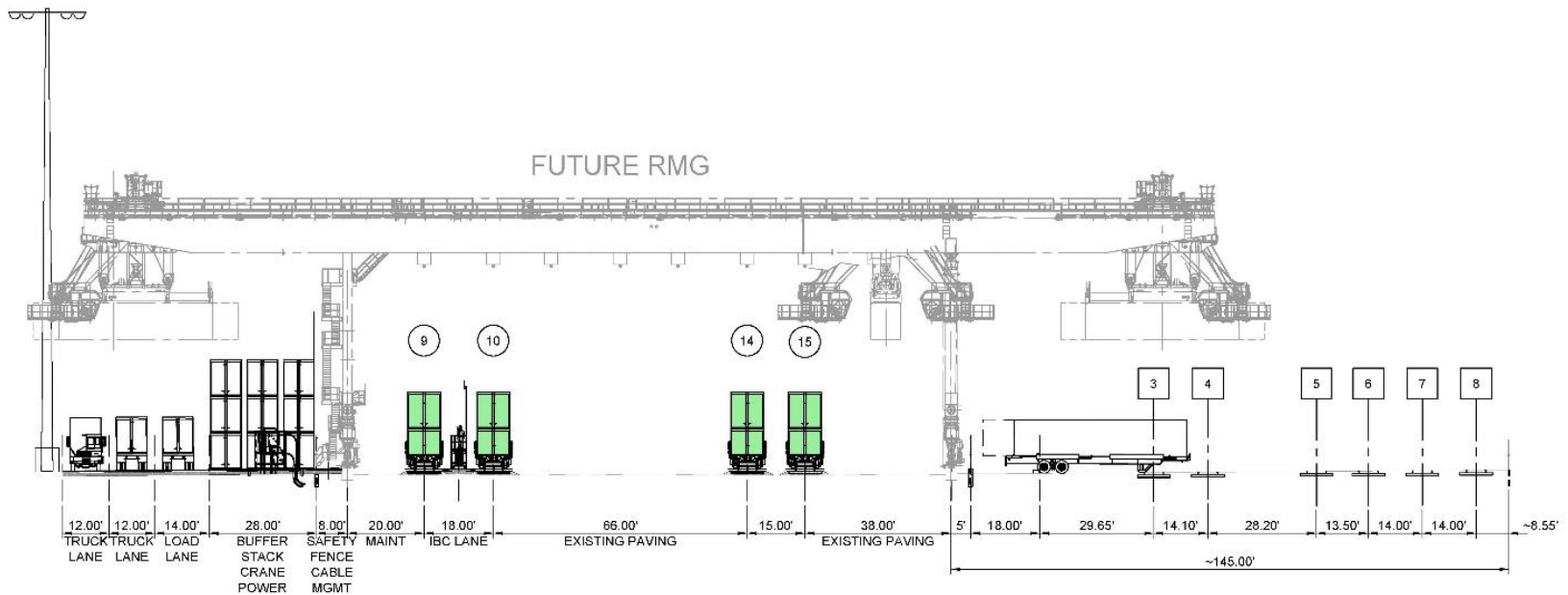
- Current international intermodal volumes are less than 2% of total Seagirt throughput
- International intermodal volumes are expected to ramp up to 10% after the completion of the Howard Street Tunnel Project
- By 2026, the share is expected to ramp up to 12%
- By 2027 the international volumes are expected to be at 15%



Port of Baltimore Rail Capacity Modernization Project

Phase 1:

- Construct two RMG Crane Rail Beams

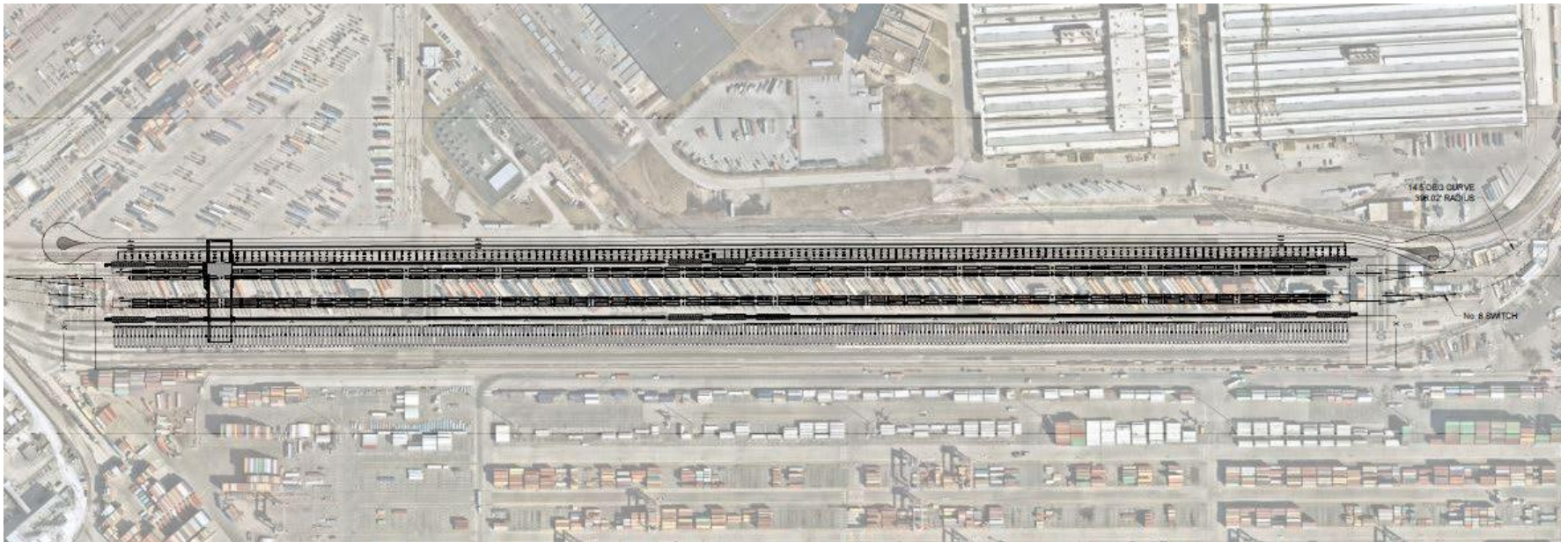


PHASE 1 GRANT BUILD W/ EXIST TRACKS 3 - 8 (LOOKING EAST)

Port of Baltimore Rail Capacity Modernization Project

Phase 2:

- Construct New Tracks 14 & 15 and Remove Existing Tracks 1 & 2
- Construct New Tracks 9 & 10



Port of Baltimore Rail Capacity Modernization Project

Project Schedule:

- Construction to begin Q2 2023
- Anticipated completion Q2 2024

Port of Baltimore Rail Capacity Modernization Project																																																
	2021				2022								2023								2024																											
Grant																																																
Application																																																
Award																																																
Agreement																																																
Duration																																																
Engineering/Permitting																																																
Final Design																																																
NEPA Approval																																																
MDE SWM/ESC																																																
CBCAC Documentation																																																
Infrastructure Construction																																																
Procurement																																																
Drainage & Utilities																																																
RMG Crane Rail Beams																																																
New Tracks 14 & 15																																																
New Tracks 9 & 10/Remove Tracks 1 & 2																																																
RMG Crane																																																
Procurement																																																
Commissioning																																																