



# Bikeable Baltimore Region Project

Baltimore Regional Transportation Board

July 23, 2024



# Bikeable Baltimore Region

## *A Plan for a Safe and Connected Biking Network*

### Vision Statement

"The Baltimore region will work together to create a bicycle network that expands opportunities for users of all ages and abilities. This connected network will support improved safety, mobility, and equitable access to jobs, schools, housing, transit, parks, and other daily destinations."



# Goals



Improve Safety and Accessibility



Advance Equity



Connect People to Places



Support Environmental and Health Benefits



Consider Context



Emphasize Collaboration



Support Community Development



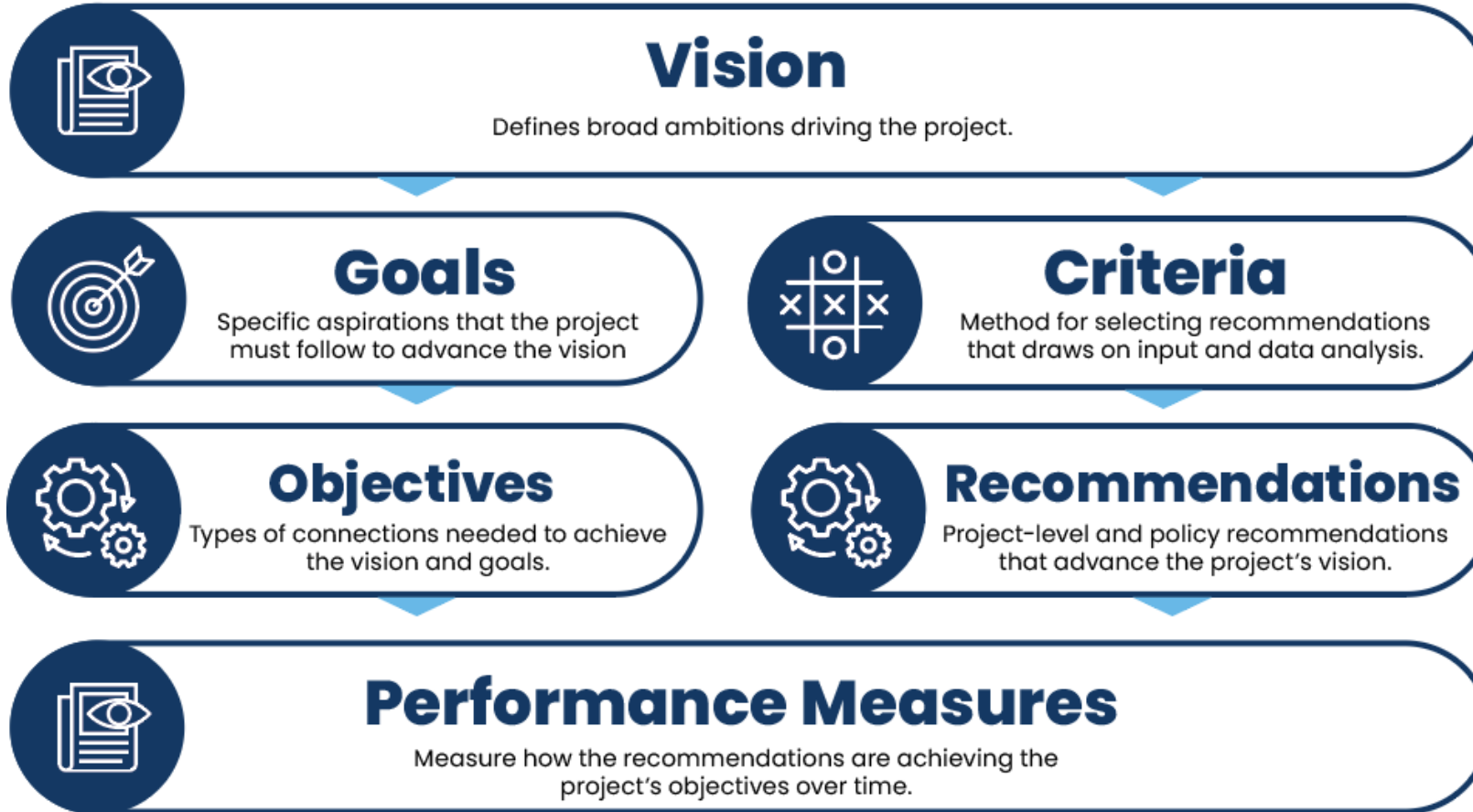
Set Attainable Ambitions



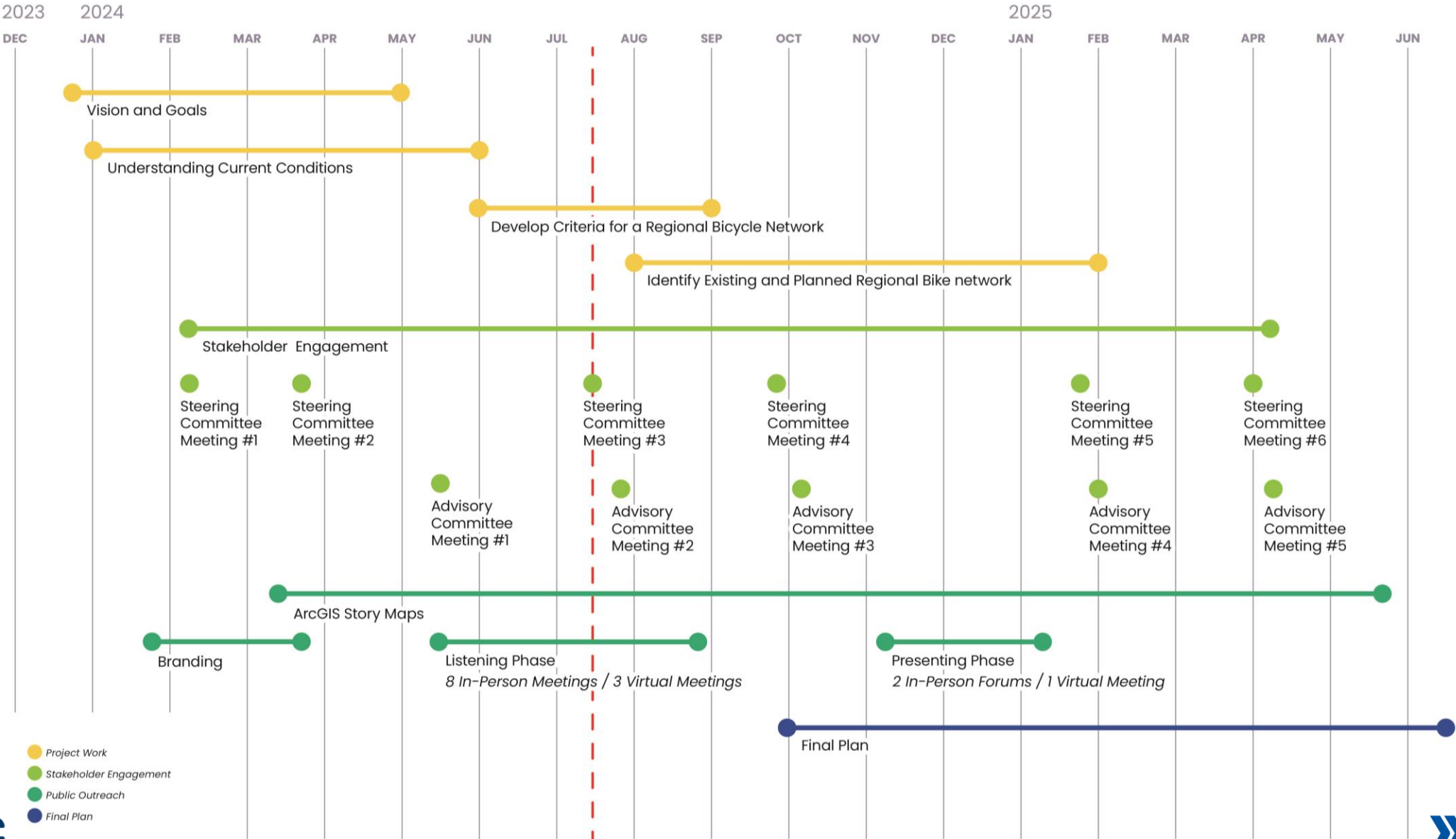
Maintain the Network



# Vision & Goals Framework



# Schedule



# Handlebar Interviews

"We're kinda stuck biking on sidewalks for safety, and it's not always the most comfortable in terms of width, tree height, traffic speeds... I just wish there were more protected lanes near us."

- Imani, Baltimore City



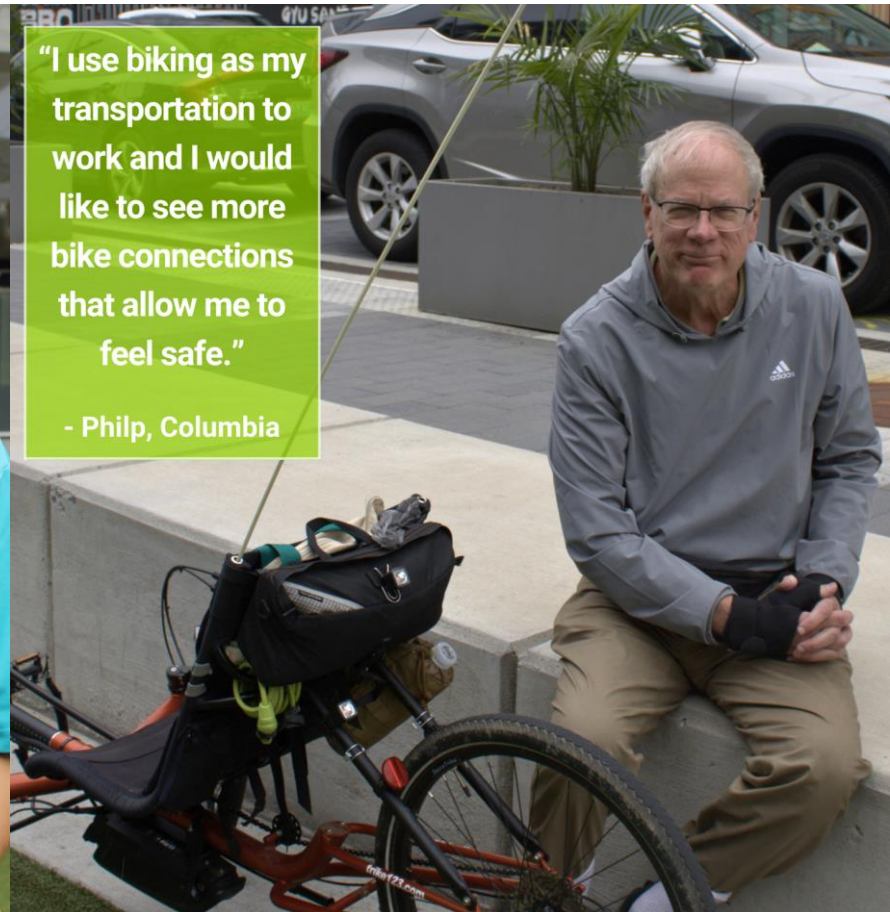
"Biking is my favorite hobby; I would love to see more bike roads and areas that are safe for bikers. I also think having more bike communities will help encourage more people to get into biking in the area."

-HJ, Ellicott City



"I use biking as my transportation to work and I would like to see more bike connections that allow me to feel safe."

- Philp, Columbia





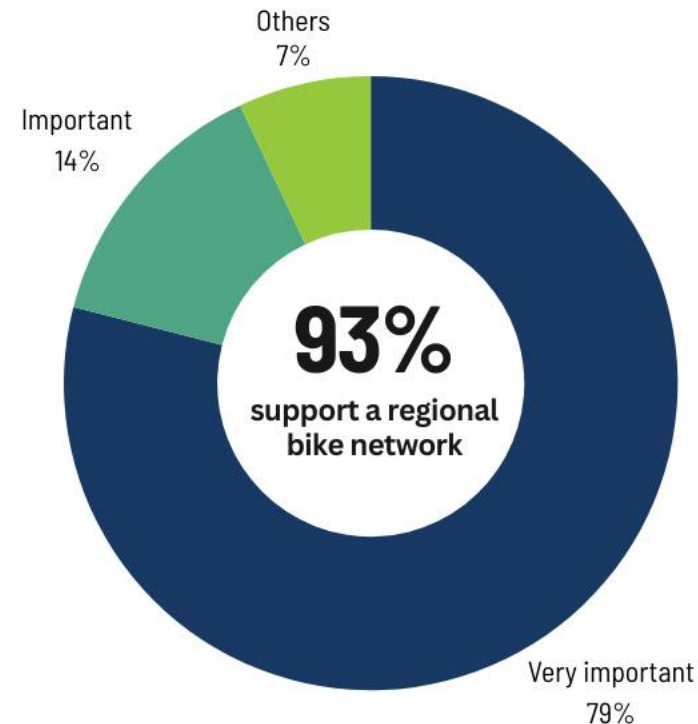
# Online Input

- As of July 17:
  - Almost 1,300 StoryMap visitors
  - 238 public comments on the project website
  - 103 survey responses
- Listening Phase comment period remains open until July 26

[publicinput.com/bikebaltoregion](https://publicinput.com/bikebaltoregion)



HOW IMPORTANT IS A  
REGIONAL BIKE NETWORK?



What would  
make a regional  
bicycle network  
a success for  
you?

- Protected bike lanes
- Connectivity between destinations
- Safety and traffic calming
- Integrate with transit
- Reduce driver aggression towards people biking

# Listening Phase Meetings



## In-Person

- Eight open house style public meetings held from June 6 – 27
- **North Laurel** Community Center
- **Odenton** Public Library
- **Westminster**, Carroll County Public Library Exploration Commons
- **Towson** Public Library
- **Baltimore City**, Enoch Pratt Central Library
- **Annapolis**, Pip Moyer Recreation Center
- **Stevensville**, Kent Island Public Library

## Virtual

- Two virtual public meetings held mid-day June 4 and the evening of June 26



# What Questions Are We Asking?



Where do you feel comfortable biking?

Based on your experiences in the Baltimore region:

- What do you like about biking?
- What do you not like about biking?

What would make a regional bike network a success to you?

What are the three top project goals for you?

# Current Conditions

**Demand Analysis:** Where are there more opportunities for short trips?

**Existing Network Summary:** What is the bike network like today?

**Equity:** Where are the region's most vulnerable communities?

**MDOT LTS Regional Summary:** Where can people bike comfortably?

**Mode Share:** Where are people biking now?

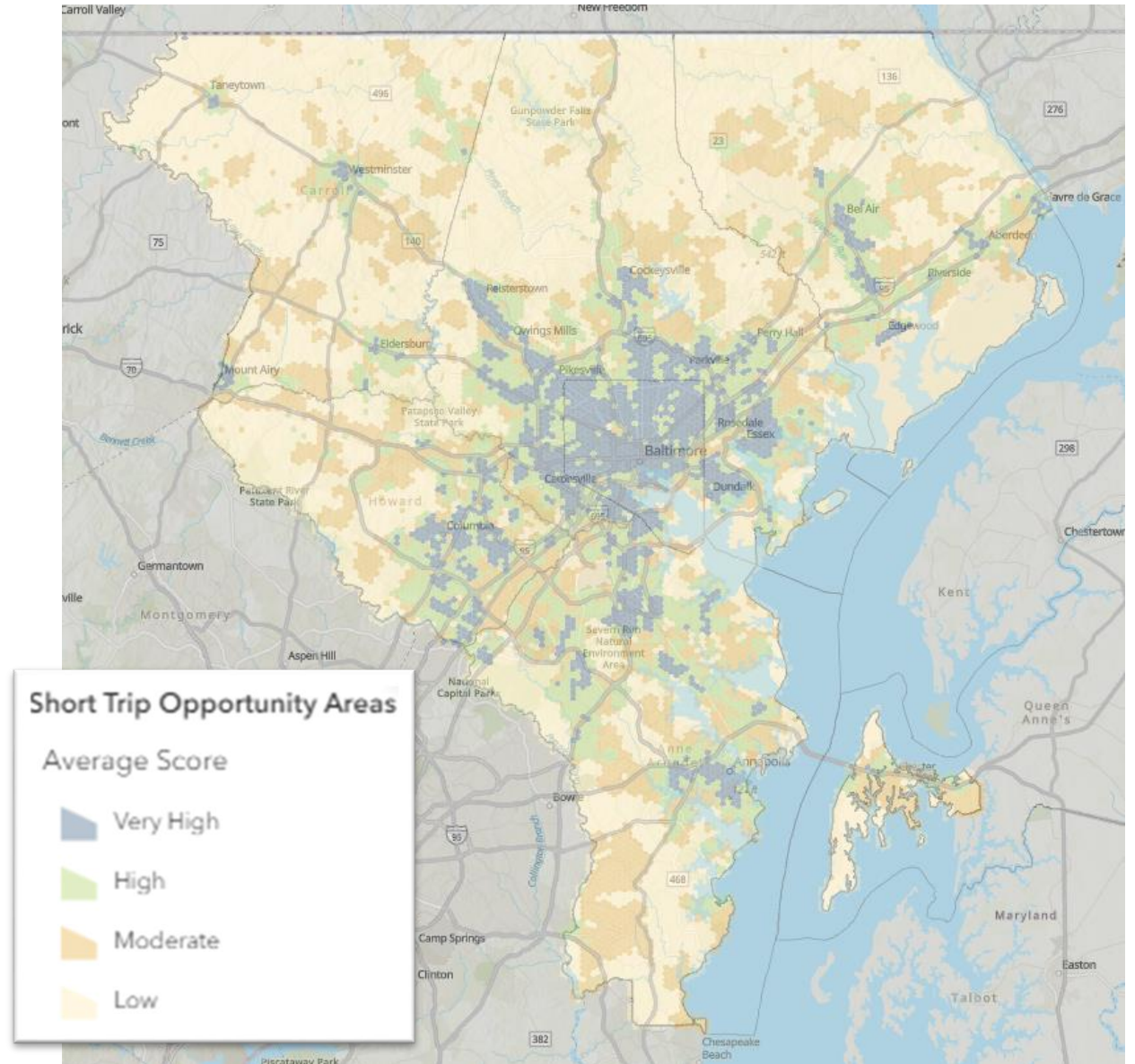
**Safety Analysis:** Where are crashes involving bicyclists taking place?



**Compared to provide additional insights**

# Short Trip Opportunity Areas (STOA)

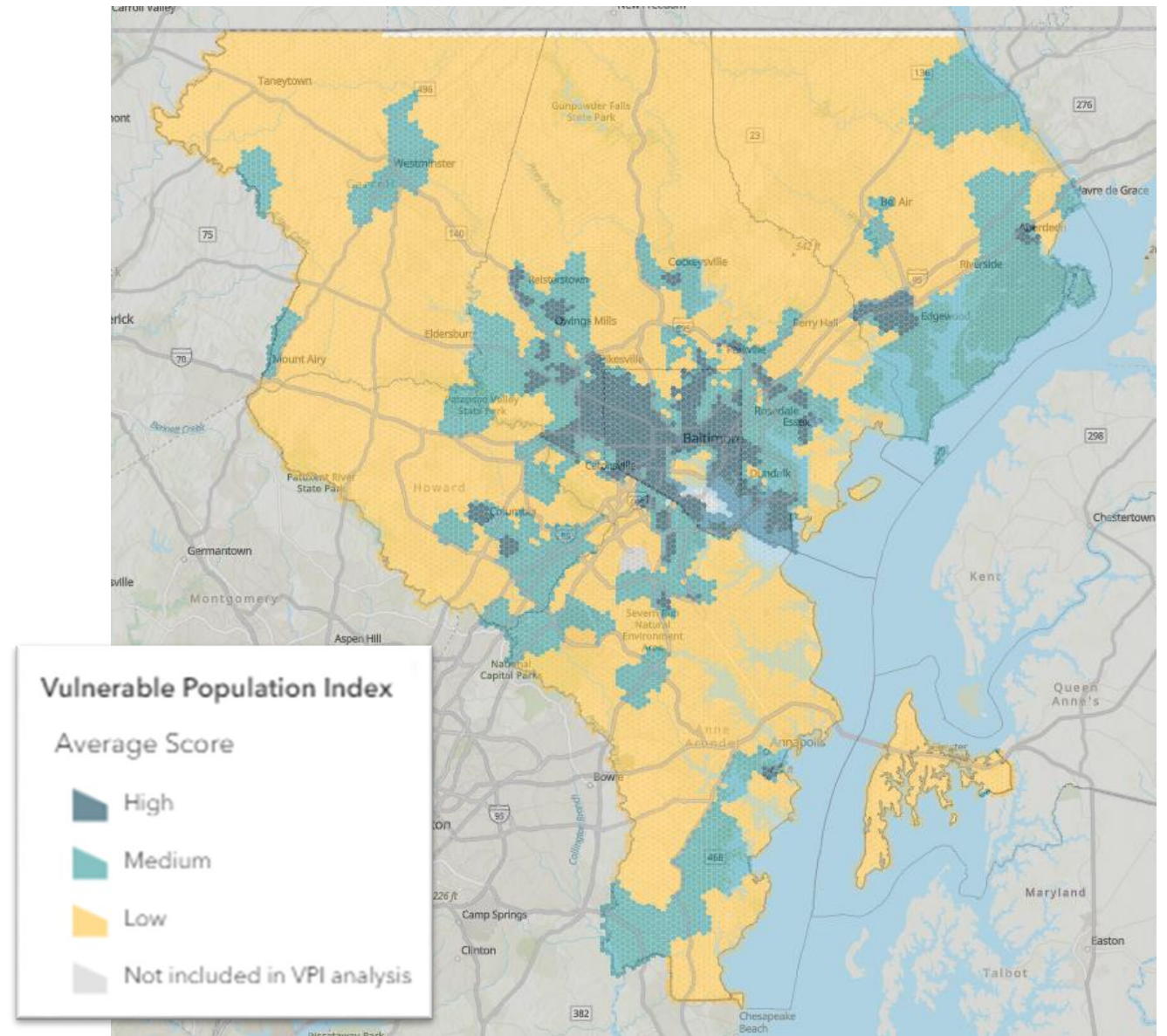
- Where destinations are close together
- MDOT Short Trip Opportunity Areas:
  - Population and Employment Density
  - Transit and School Coverage
  - Zero Car Households





# Vulnerable Population Index (VPI)

- **Measure of community vulnerability based on seven populations:**
  - Low-income
  - Racial minorities
  - Hispanic or Latino
  - People living with a disability
  - Elderly people (75+)
  - People that don't speak English well
  - People without access to a car



# Next Steps

- Develop Regional Bike Network criteria and identify draft Regional Bike Network (Fall 2024)
- Identify objectives
- Hold Comment period #2
  - Present draft regional bike network to public
- Steering and Advisory Committee meetings held at key points throughout project
- Finalize Regional Bike Network
- Develop strategies, and recommendations
- Final Bikeable Baltimore Region plan (June 2025)



**Charlene Mingus** | Active Transportation Planner



@BALTIMORE METROPOLITAN COUNCIL

