



2018-2019 Maryland Travel Survey (MTS) Results – Making The Transit Connection in the Baltimore Region

Technical Committee

November 1, 2022



Presentation Outline



- **Baltimore Region Analysis**
 - Purpose of Study
 - Rail
 - Bus
 - Definition of Need
 - Rail
 - Bus
 - Results (Rail & Bus)
 - Maps (Census Tract)
 - Making The Transit Connection - Rail
 - Making The Transit Connection - Bus

Purpose of Study



- Identify Transit Riders Who Need Help To Access Transit From Home.
 - Rail
 - Bus

- Identify Location of Transit Riders Who Need Help To Access Transit From Home (Census Tract).
 - Rail
 - Bus

Definition of Need - Rail



- Transit Access Modes - Rail
 - Walk
 - Bike
 - Park-and-Ride
 - Kiss-and-Ride
 - Taxi/Uber/Lyft (Average Trip Cost)
 - Uber = \$20
 - Lyft = \$27
- Source: Investopedia

Definition of Need - Bus

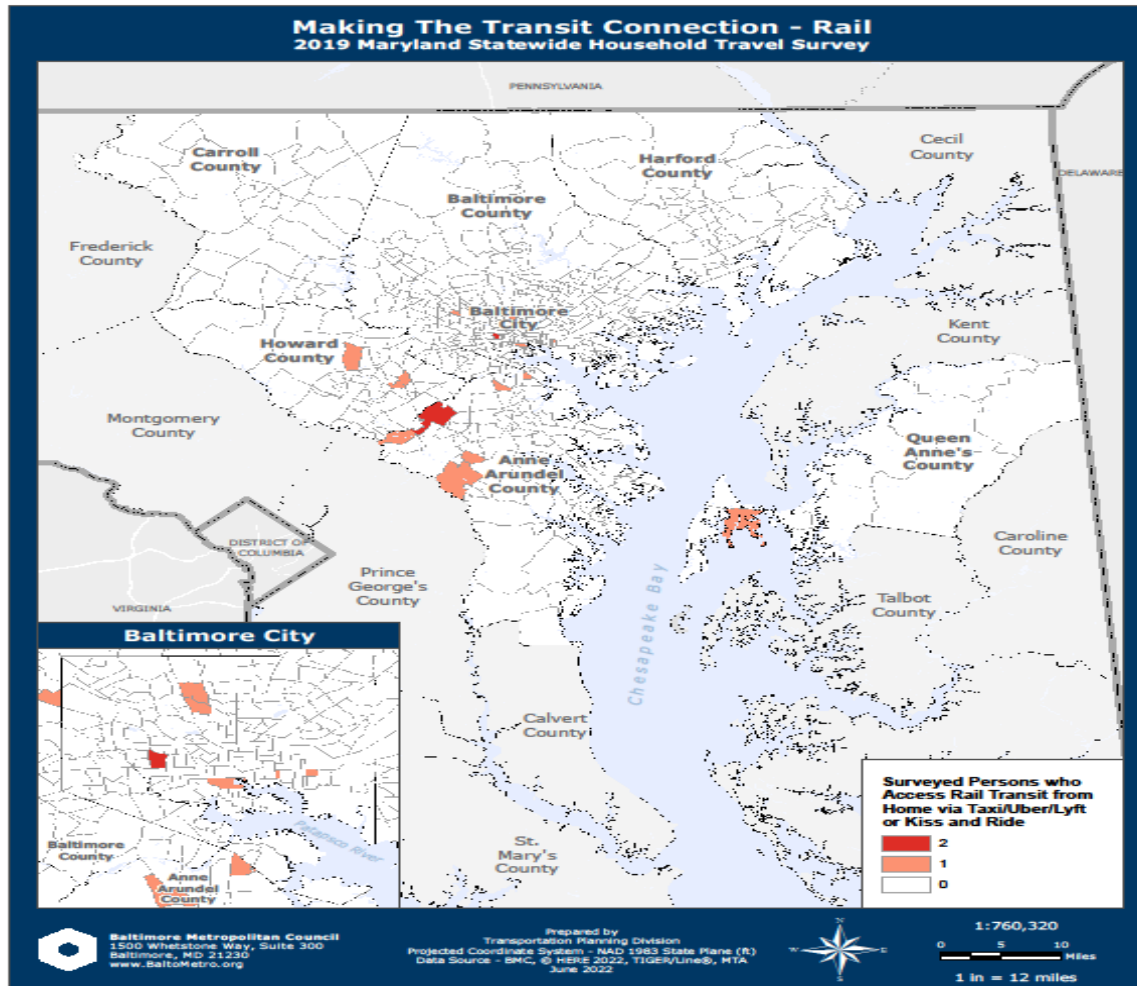


- Transit Access Modes - Bus
 - Walk
 - Park-and-Ride
 - Kiss-and-Ride
 - Taxi/Uber/Lyft (Average Trip Cost)
 - Uber = \$20
 - Lyft = \$27
- Source: Investopedia

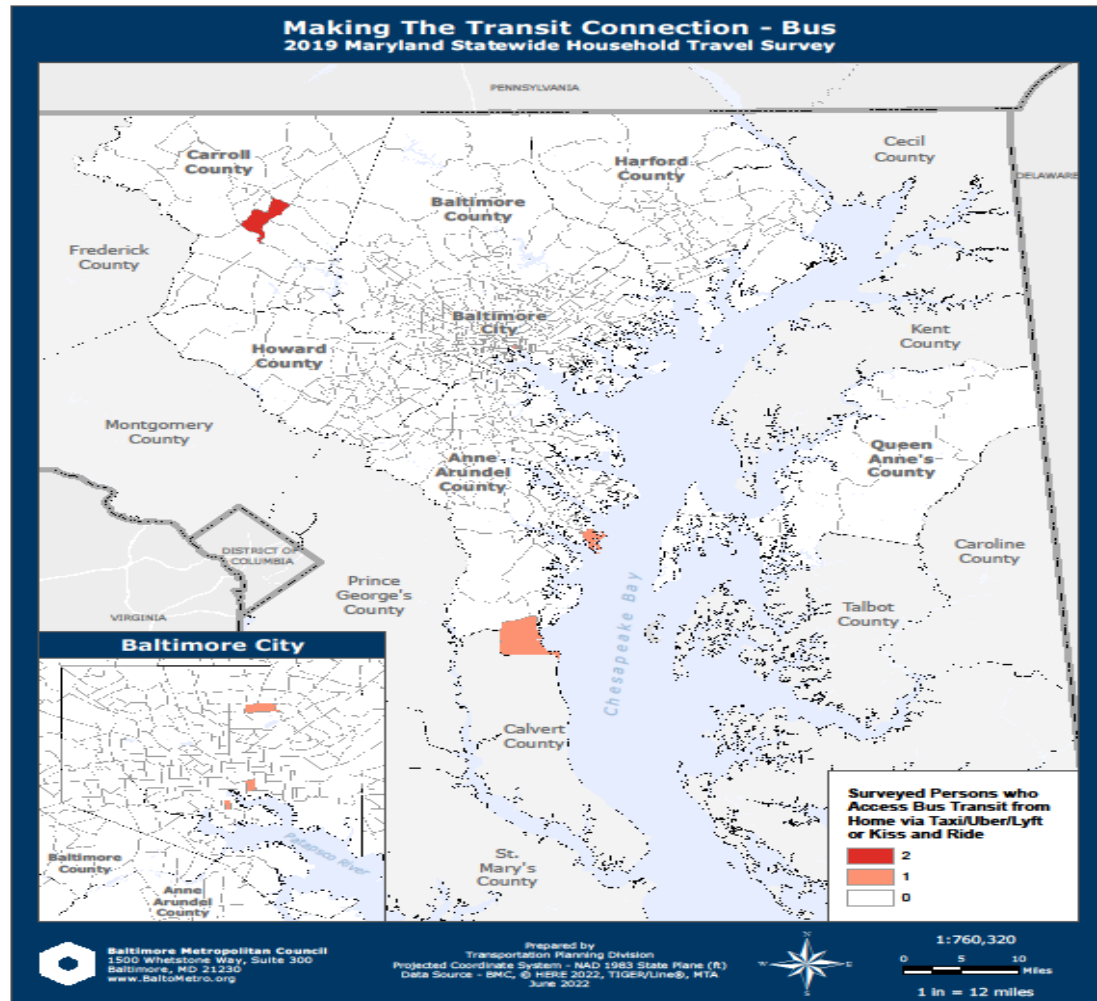
Results (Rail & Bus)

- In General, Rail Transit Riders are more likely than Bus Transit Riders to Need Help Accessing Transit from Home.
- A Total of Twenty-one (21) Persons from Nineteen (19) different Census Tracts Needed help to Access Rail Transit from Home.
 - ❖ Help is defined as 1) Kiss-and-Ride or 2) Taxi/Uber/Lyft
- A Total of Seven (7) Persons from Six (6) different Census Tracts Needed help to Access Bus Transit from Home.
 - ❖ Help is defined as 1) Kiss-and-Ride or 2) Taxi/Uber/Lyft
 - ❖ Note: A Person who Makes Two (2) Trips from Home on the Same Day Counts as Two (2) Persons.

Map: Persons Who Need Help Accessing Rail Transit from Home by Census Tract



Map: Persons Who Need Help Accessing Bus Transit from Home by Census Tract



For More Information

Robert Berger | Senior Transportation Planner

410-732-0500 x1037 | rberger@baltometro.org | www.baltometro.org



@BALTOMETROCOUNCIL



@BALTIMORE METROPOLITAN COUNCIL



@BALTIMORE METROPOLITAN COUNCIL

