



*Baltimore Regional Transportation Board*

# REVIEW OF ONGOING AND UPCOMING UPWP TASKS

# TC Update

**February 7, 2023**



## RECENTLY COMPLETED TASKS

# Planning Process Review

**Scope:** to understand and examine the local government development planning and review processes, with a focus on how transportation impacts are considered and evaluated.

**Snapshot of Local and Best Practices:** A final report was provided to staff in November 2022. This report outlined definitions, the basic structure and enabling authority each jurisdiction uses to undertake planning and development review. The report provides development review process summaries by jurisdiction and defines best practices and issue areas. The report made some conclusions and recommendations for processes in the region and may serve as a basis for possible future work.

# LOTS Bus Stop Assessments

## Scope:

- Survey and mapping of 1,500 Locally Operated Transit Systems (LOTS) bus stops, recommendations for improvements, cost estimates
- Participating agencies: Annapolis Transit, Anne Arundel OOT, Carroll Transit System, Charm City Circulator, Harford Transit, RTA



## Outcomes:

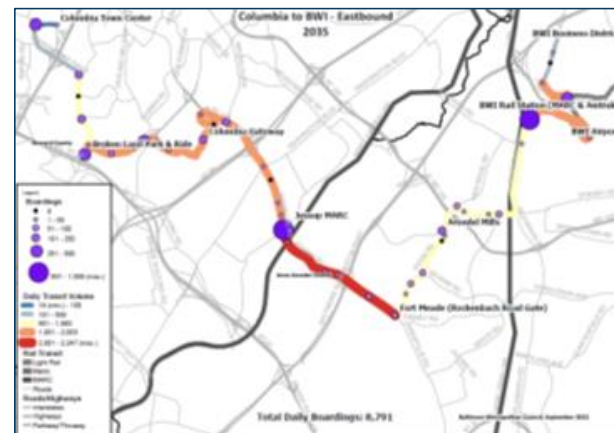
- Each participating jurisdiction received GIS based records of all local bus stops in their service areas and an accompanying report/manual
- BMC held meetings with the LOTS and local GIS teams to demonstrate how to use the tools to quickly assess improvement recommendations to plan and conduct maintenance and improvements
- BMC coordinates with jurisdictions annually to update the data, the transit stops update is currently underway

**Completed:** June 2022. A [task summary](#) and [GIS data](#) are available online.

# RTP Corridor #25: BWI to Columbia Feasibility Study Pilot

## Scope:

- Corridor feasibility study phase
- Evaluate transit needs and identify mode, alignment, routing and potential stops/station areas along the corridor.
- Early screening of the corridor for potential state and federal funding sources



## Outcomes:

- 14 alternatives evaluated using criteria including service to vulnerable populations/specific markets, ridership potential, convenience, and policy support
- Six alignments recommended for additional study: 3 from Columbia to BWI Business District and 3 from Columbia to Fort Meade.
- Cost estimates and recommendations for next steps.

**Completed:** Dec 2022. [Technical memos and study summary](#) are available online.

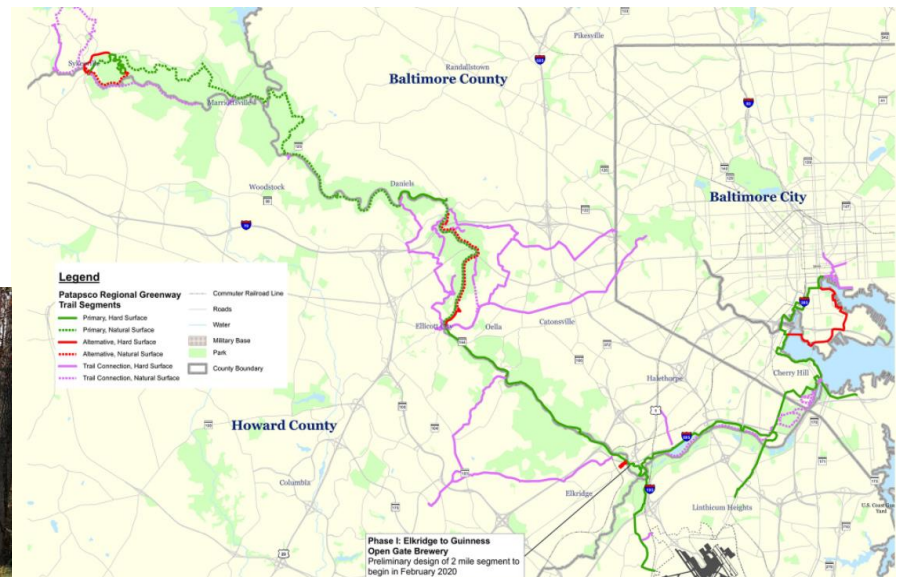
# PRG: Sykesville to McKeldin

**Scope** - 30% Design of PRG segment in Carroll County.

**Outcome:** Developed 2 alignments for Sykesville to Freedom Park segment (0.8 miles) and 2 alignments for Freedom Park to McKeldin Area segment (7.5 miles). Included a steering and advisory committee and held 2 public meetings. Received 43 comments on the project.

**Completed:** June 2022

Since completion, Carroll County and the City of Sykesville have initiated next steps!



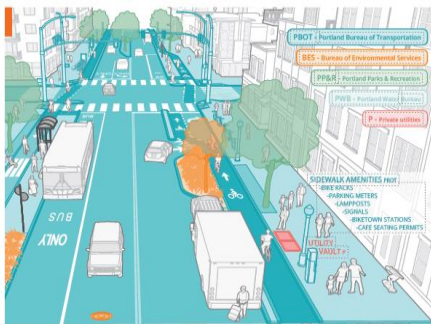


# Transportation Impact Study (TIS) – Phase 2

**Scope:** Follow-up to the Phase 1 Study that looked at current TIS guidelines to consider “Additional Parameters for Consideration” in traditional TISs.

Phase 2 looked into eight parameters/topics of interest, including: 1) Making safety analyses a key consideration, 2) Controlling speeds, 3) De-prioritizing vehicular throughput, 4) Use of multi-modal performance metrics and multi-modal analyses, 5) Addressing impacts of multiple proposed developments, 6) Balancing the needs of more housing and business with less traffic, 7) Need for post-development audit, and 8) Need for different TIS requirements

**Outcome:** Developed a table-based approach which includes factors that may be applied to the parameter/topic, as well as potential means of evaluating those factors.



**Completed:** September 2022. [Final report, evaluation template and case study summary table](#) are available online.

# Local Financial Forecasts

**Scope:** Develop a local funding projection tool for use in the LRTP to present a more complete picture of Baltimore region transportation revenues. Includes flexibility to update/improve for future LRTP documents.

**Outcome:** County-by-county projection of local system preservation, expansion, and operating revenues through 2050. Approved by the BRTB in January 2023 as part of Resilience 2050 Financial Forecast Resolution #23-13.

**Completed:** Consultant task completed in late CY 2022.

Time Period	Operating (M)	System Pres. (M)	Expansion (M)	Total (M)
2028-2032	\$2,829	\$1,223	\$185	\$4,237
2033-2037	\$3,193	\$1,304	\$199	\$4,696
2038-2042	\$3,614	\$1,397	\$215	\$5,226
2043-2047	\$4,104	\$1,506	\$233	\$5,843
2048-2050	\$2,731	\$963	\$150	\$3,844
Total 2028-2050	\$16,471	\$6,393	\$982	\$23,846



# ONGOING TASKS

# Pedestrian Infrastructure Assessment

**Scope:** Develop an ArcGIS-based desktop tool to assist planners in: prioritizing sidewalk projects, identifying sidewalk mileage and gaps, visualizing sidewalk data, and facilitating pedestrian planning in general.

Product included purchase of a comprehensive regional sidewalk and crosswalk dataset created by Ecopia using artificial intelligence.

**Products:** Final delivery of the tool, manual, instructional webinar and the sidewalk inventory will be delivered to planners and GIS staff once data agreements are signed.

**Completion:** late February 2023.



# Transportation and Land Use Connections

## **Scope & Status for: Wabash Avenue Separated Bike Facility –**

Technical assistance to Baltimore City to undertake a feasibility study and corresponding 30% preliminary design plans for all-ages separated bicycle facility improvements along Wabash Ave between Cold Spring Metro driveway and Patterson Ave (~2.3 miles). The proposed bicycle facilities would improve north-south bicycle accommodation in the northwestern portion of the city and would connect with the existing and planned facilities identified in the City's Separated Bike Lane Network Plan. Concepts are completed and now in the public review process.

<https://www.baltimorebikeways.com/wabash-avenue/>

## **Scope & Status for: Bayview Avenue – Bike facility feasibility Study –**

Technical assistance to the City of Annapolis to undertake a feasibility study of various alternatives for an on-street protected bike lane along the Bay Ridge Ave corridor, from the Spa Creek Bridge to Quiet Waters Park. This project will serve as a proof of concept of the potential of protected bike lanes in historic towns, provide guidance on best practices, and address the Bay Ridge Ave corridor as case study for Annapolis and elsewhere. Concepts underway.

# InSITE Calibration/Validation

## Scope

- 2019 InSITE Calibration and Validation using 2019 MD Household Travel Survey, MDOT MTA Automatic Traffic Count, and MDOT SHA classified counts.
- Enhance InSITE by reducing runtime (population sampling – 25% and TourCast multi threading model components) as well as expand model area – added Queen Anne's, Adams and York counties.
- Recent purchase of 2019 Location-based services (LBS) data collected from mobile devices to aid in calibration/validation – Time of Day and Jurisdiction to Jurisdiction travel patterns.

## Complete

- 2019 InSITE Validated model used in 2023-2026 TIP mobile source emission estimation, Corridor #25 ridership estimation, LRTP project scoring, and other local/state corridor scenario analysis.

## Underway Activity

- Revised transit walk access/egress and drive access network coding method, enhanced 2019 validation, and model application support.

# Transportation Issues in Historic Town Centers

**Scope** - Study intended to be a model for other historic areas in the region. Study includes 3 main elements: Parking solutions, Wayfinding guidelines and Multimodal access and management solutions.

**Status** - Compiled existing conditions data, held Steering Committee meetings, Advisory Committee meetings and a public meeting on Dec. 8th. Received Tech Memo #1 that documents existing parking conditions, existing wayfinding signage and existing bicycle and sidewalk facilities.



**Soon to Come:** Tech Memo #2 with final recommendations and implementation plan for parking management strategies, multimodal improvements, wayfinding design and location recommendations, consolidation of public comments, model guidelines and best practices, presentations to Technical Committee, Howard County Planning Board, and Ellicott City Partnership.

**To be completed:** May 2023

# Transportation and Crash Data Dashboards

## Scope

- Create highly interactive electronic dashboards that engage users in a data-driven approach to explore observed and simulated data to analyze trends, build queries to uncover data relationships, and tabulate/summarize data for reporting.
- Develop a series of topical dashboards organized and reported by individual jurisdictions as well as a regional compendium, utilizing national, state and local datasets, as well as the region's travel demand model.
- Develop dashboard user and maintenance guides
- Topics – Demographics, Performance Monitoring, Transit, Freight, TIP, Air Quality, and InSITE simulation

## Status

- Final draft dashboards and user/maintenance guides are under review
- BMC communication team has initiated public access dashboard website design

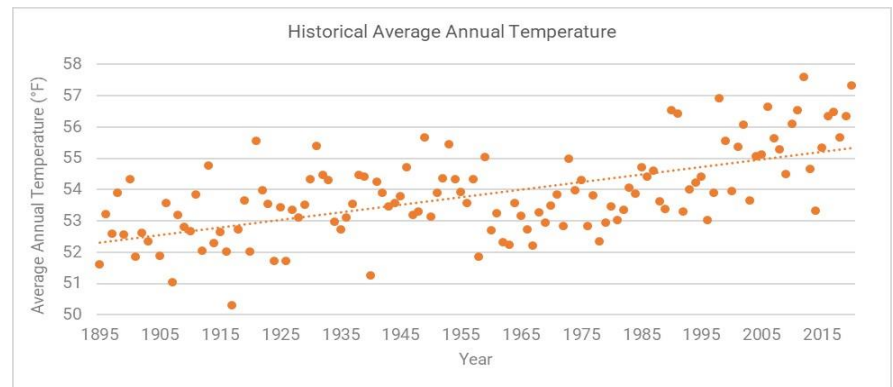


# Climate Change Toolkit Phase II

**Scope:** 1) Develop more detailed guidance to operationalize the *Climate Change Resource Guide*, focusing on Transportation, Stormwater, and Water service areas and 2) Develop recommendations for instituting ongoing inter-jurisdictional coordination on adaptation strategies being discussed, selected, funded, and implemented by the region's public works and transportation departments.

**Progress:** Draft documents have been reviewed and the final documents are coming for: Guidance to Operationalize Climate Change Resource Guide and Recommendations for Instituting Ongoing Inter-jurisdictional Resilience Coordination

**Anticipated Completion:**  
February 2023



# PRG: Guinness to Southwest Area Park

**Scope:** Preliminary design of a 6.4 mile segment of the Patapsco Regional Greenway (PRG) from Guinness Open Gate Brewery to Southwest Area Park/Patapsco Light Rail Station in Baltimore County.

**Progress:** A public meeting and comment period for initial alignments will occur in March 2023. A second public meeting and comment period on the preferred alignments will occur in Fall 2023.

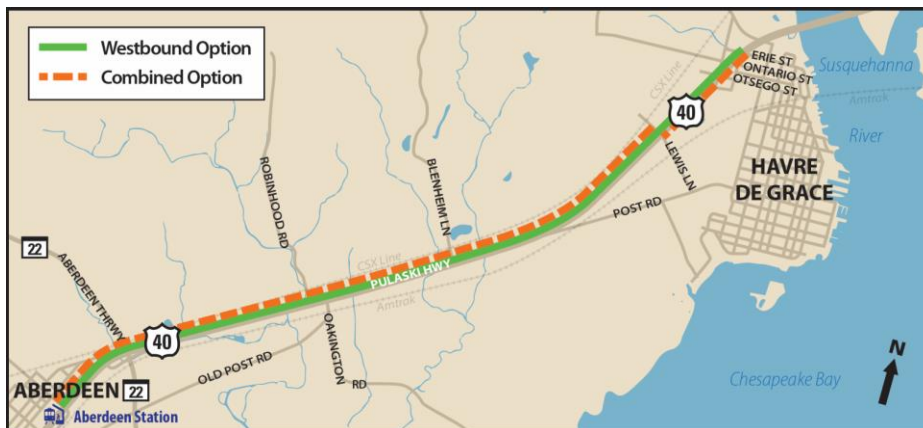
**Anticipated Completion:** Winter 2023/2024



# US 40 Bicycle/Pedestrian Improvements

**Scope:** Multi-modal concept plan for an approximately 5 mile segment of US 40 in Harford County between the City of Havre de Grace and the City of Aberdeen.

**Progress:** The first public meeting and comment period with two alignments was held last Fall. A second public meeting will be held on 2/9 with a comment period with two preferred alignments.



**Anticipated Completion:**  
April 2023

# Safe System Approach

**Scope:** Further align local safety programs with the SSA. This includes a review of existing safety practices and challenges/gaps through three local workshops. The overall project goal is to develop guidance and prepare examples to demonstrate how members can further integrate the elements of the SSA into programs to 1) continue to reduce severe crashes and 2) be positioned to obtain safety funding.

**ID Best Practices:** The biggest piece of this task is the workshops. These will be used to understand what safety practices (aligned with the SSA) already exist and can be built upon (or shared across the region) and where the gaps in SSA alignment exist to make recommendations to address these.

**Guidelines:** It will include an education component, the roll up of implementation ideas from the workshops, “ideal” scenarios for an agency wanting to plan and implement SSA, and a summary of the key findings and ideas for next steps. This task also includes a PowerPoint summarizing the project results and an executive project presentation.

**Completion:** June 2023.

# Connected & Automated Vehicles

**Scope:** As use of CAVs increase, it will be critical for local jurisdictions to understand how CAVs might impact the region's transportation infrastructure, to plan for these impacts (both positive and negative), and to work towards having CAVs support local goals, particularly related to equity, safety, environmental stewardship, and reliability. This project includes development of a CAV overview white paper and customized, actionable recommendations for the region and local jurisdictions on preparing for CAVs.

**Progress:** A White Paper on relevant CAV has been completed and shared with the TC. Draft under development of customized, actionable CAV recommendations along with a User Guide and Executive Summary.

**Anticipated Completion:**  
July 31, 2023

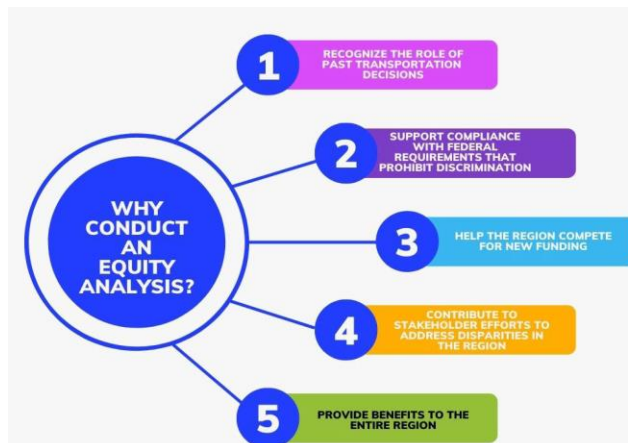


# Equity Scan & Recommendations

**Scope:** help the agency develop a meaningful definition of transportation equity, particularly with regard to the disadvantaged and vulnerable communities of the Baltimore region; to learn from peer agencies across the country about best practices and pitfalls with attempts to advance equitable planning and decision-making processes; and to craft strategies for advancing recommendations on policies and programs that could improve BMC's ongoing efforts to promote transportation equity.

**Progress:** Initial interviews with BMC to assess role of equity in the UPWP, PPP, TIP, and LRTP. Preparing to scan 20 MPO websites, followed by 5 direct interviews with the goal of a white paper on best practices. Scheduled to engage the TC on 4/4 and 5/2. Will also engage with the Transportation CORE.

**Anticipated Completion:** June 30, 2023





# UPCOMING TASKS

# Status of Upcoming Tasks

- **Vision for Integrated Regional Bicycle Network**
  - Waiting for a decision on regional Bicycle inventory to proceed
- **RTP LOTS Skills and Technology Support**
  - An RFP is nearly complete, waiting for new transit hire
- **Growing Transit Post-Pandemic**
  - An RFP is nearly complete, waiting for new transit hire
- **Expanding Coverage for EV Charging Stations**
  - An RFP is being tweaked, release anticipated later in February

# Status of Upcoming Tasks

- **Coordination of Human Service Transportation Providers**
  - An RFP is nearly complete, waiting for new transit hire
- **Evaluating of "Fares, Fees & Fines" for Undue Burdens**
  - RFP is being released soon, hoping to benefit from work on equity scan.
- **RTP Corridors**
  - Discussions underway with BRTB members, followed by a decision on the next corridor

# For More Information

---

**Todd Lang** | Director of Transportation Planning

410-732-9566 | [tlang@baltometro.org](mailto:tlang@baltometro.org) | [www.baltometro.org](http://www.baltometro.org)



@BALTOMETROCOUNCIL



@BALTIMORE METROPOLITAN COUNCIL



@BALTIMORE METROPOLITAN COUNCIL

